



BROODINGS... N° 21: October 2004

brood: to ponder morbidly
or persistently

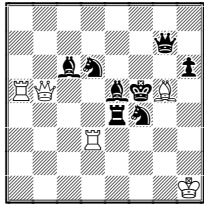
2QQ

[Collins Dictionary]

New chess problems by C.J. Feather
10 Tinwell Road GB-STAMFORD PE9

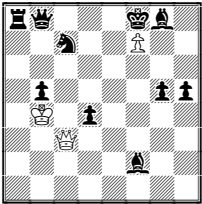
[cfeather@ukonline.co.uk]

1.

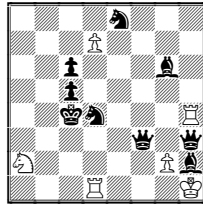


h#2 2 solutions h#2 2 sols b) ♖d4>e5

2.

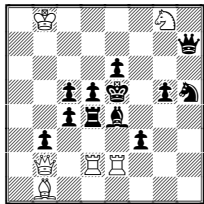


3.



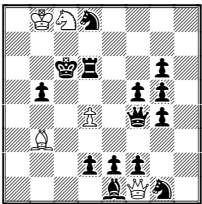
h#2 3 solutions

4.



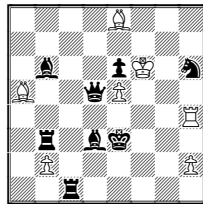
h#2 b) ♖d5>f5

5.



h#2 3 solutions

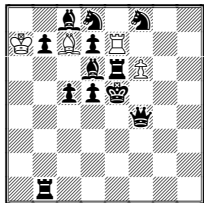
6.



dedicated to Zivko

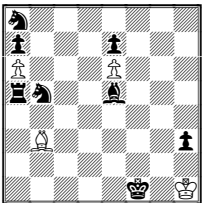
h#2½ 3 solutions

7. step this way, please



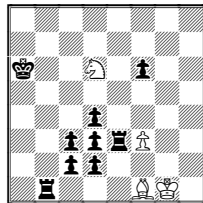
h#3 b) ♖f6>b6

8. dual avoidance



h#4 2 solutions

9. what battery?

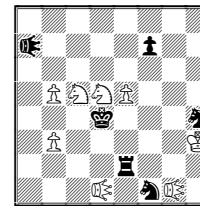


h#4½

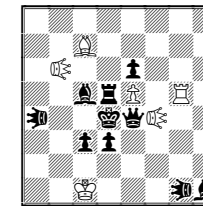
10. battery-style effects

11. CCM 14th TT 2004 (see note)

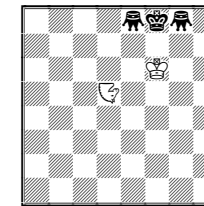
12. change of scene



h#2 b) ♖a7>d7
Locusts



h#3 2 solutions
Kangaroos



sh#15* Nightrider
and Grasshoppers

We have mostly orthodox problems this time. The short helpmates are too easy for hints but the dedication of n°6 may well indicate its theme! The idea of n°3 really does seem to necessitate both black queens, or can someone show otherwise?

Grasshoppers, locusts and kangaroos have all been explained in previous issues. The kangaroo problem appeared in a recent tourney on Juraj Lörrinc's very interesting website, which can be found at **Errore. L'origine riferimento non è stata trovata.** The nightrider (N) takes as many knight steps as desired in a straight line. The BK in n°12 would be mated if the N were, for example, on c2 or h4.

Solutions are given below but comments are of course welcome, as ever. Best wishes to all readers.

SOLUTIONS:

1 1.Ke6 Rxd6 2.Bxd6 Qf5# & 1.Kg4 Bxf4 2.Bxf4 Qh5# **2** a) 1.Ke7 f8S 2.Kd6 Qc5# & 1.Kg7 f8Q 2.Kg6 Qd3# b) 1.Ke7 f8Q 2.Ke6 Qc6# & 1.Kg7 f8S 2.Kh8 Qxe5# aAbB=>aBbA, with all different continuations. **3** 1.Qfg4 dxe8Q 2.Sb5 Qe6#, 1.Qf4 dxe8S 2.Sb3 Sd6# & 1.Qe4 d8Q 2.Sf3 Qd3# **4** a) 1.Kf5 Rxd4 2.Bxb1 Qxb1# b) 1.Kd6 Bxe4 2.Rxd2 Rxd2# Here we have mutual captures combined with one of the less usual motivations for capture of pinner by pinned. **5** 1.Qe3 Qg2 2.Rd5 Qxd5#, 1.Qe4 Qh3 2.Rd7 Qc3# & 1.Qf3 Qxe2 2.Rf6 Qe8# A favourite triple-avoidance theme **6** 1... Rd4 2.Qe4 Bh5 3.Kf4 Bd2#, 1... Rc4 2.Qd4 Bd2 3.Ke4 Bc6# & 1... Rb4 2.Qc4 Bc6 3.Kd4 Bxb6# A little variation on the anticipatory selfpin (ASP) – Živko Janevski's book on the ASP in the h#2 has recently been published and is very much recommended to all readers. **7** a) 1.Bxc7 Re8 2.Re7 fxe7 3.Ke6 exf8Q# b) 1.Rxe7 Bb8 2.Bc7 bxc7 3.Kd6 cxd8S# **8** 1.Sd6 Bc2 (Ba2?) 2.Sb7 axb7 3.Ra1 bxa8Q 4.Re1 Qf3# & 1.Sb6 Ba2 (Bc2?) 2.Sd7 exd7 3.Rxa2 d8Q 4.Rf2 Qd1# **9** 1... Sc4 2.Rb7 Bxd3 3.Kb5 Be4 4.Kxc4 Bxb7 5.Kd3 Ba6# **10** a) 1.Se3 Lxe2-f3 2.Kxc5 Lxe3-d3# b) 1.Rd2 Lxf1-e1 2.Kxd5 Lxd2-c3# Amazingly, these mates appear to be models. How odd! **11** 1.Ksxb6 Ksc4 2.Qg4 Ksh4 3.Kse3 Rxg4# & 1.Ksxf4 Kse3 2.Bb6 Ksa7 3.Ksc4 Bxb6# Intensive kangaroo effects **12** 1... Nb6# 1.Gc4 2.Kg8 6.Kg4 7.Gh4 8.Kh5 10.Kh7 11.Gh8 12.Gh6 13.Kg8 14.Gh8 15.Kh7 Kf7#