



BROODINGS...

N° 24: June 2005

brood: to ponder morbidly
or persistently
[Collins Dictionary]

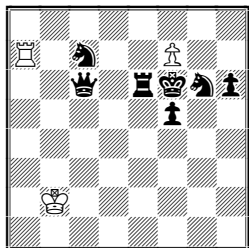
New chess problems
by C.J.Feather
10 Tinwell Road GB-STAMFORD PE9 2QQ
[cfeather@ukonline.co.uk]

Apologies for the delay in publishing this issue of *Broodings*. Judging and other tasks have taken too much time recently; and I seem to have forgotten how to compose unorthodox problems, so the last two here are just old schemes which I have resurrected.

A few notes on the problems: The idea seen in n°1 is the subject of a forthcoming article of mine in *Varietim*. If you dislike the third solution in n°7 you can add a n on e7. N°8: the white and black "tries", in parts a) and b) respectively, do not convince me, so I shall be surprised if they convince you. No hints this time, everything is too obvious!

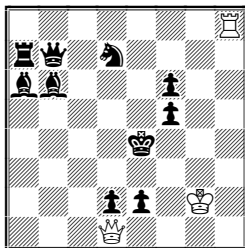
Best wishes to all. I hope to present some rather more interesting originals next time.

1.



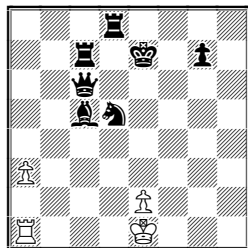
h#2 b) c7=>♗
c) c7=>♖ d) -♗c7
e)& e6=>♗ f)& e6=>♗

2.



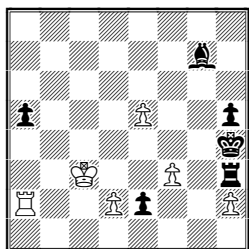
h#2 3 solutions

3.



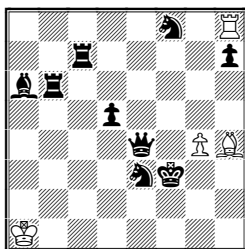
h#3 2 solutions

4.



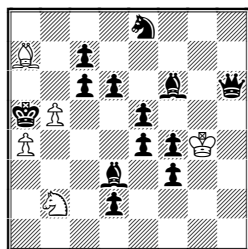
h#3 b) -♗h5

5.



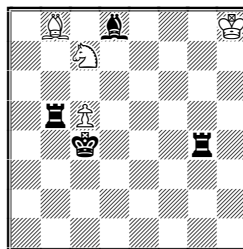
h#3 3 solutions

6.



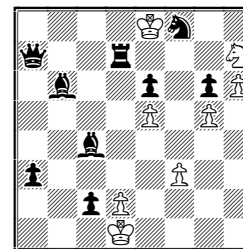
h#3 3 solutions

7.



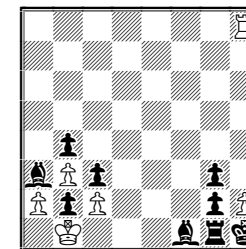
h#4 3 solutions

8.



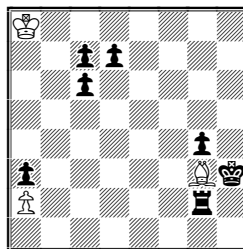
h#4 b) ♖f3>c3

9.



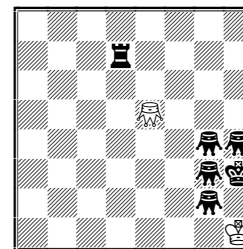
h#6*

10.



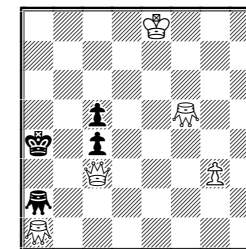
h#7½

11.



h#4 2 solutions
b) d7=>♗

12.



sh#14*

SOLUTIONS:

1 a) 1.Re5 f8S 2.Se6 Sh7# b) 1.Bf4 f8B 2.Bg5 B-g7# c) 1.Kg7 f8R 2.Rf7 Raxf7# d) 1.Re5 f8S 2.Qe6 Sh7# e) 1.Sg5 f8B 2.Qe6 Bg7# f) 1.Kg7 f8R 2.Bf7 Raxf7# Parts a)-c) present a correspondence between the c7 Forsberg & the f8 promotions and parts d)-f) a cycle between the e6 Forsberg & the promotions. Too many repetitions, though! 2 1.Qb8 Rh4 2.Kd3 Qb3#, 1.Qc8 Qa4 2.Ke3 Rh3# & 1.Qc7 Qxd2 2.Ke5 Re8# 3 1.Rdd7 O-O-O (Kd2?) 2.Kd8 Rf1 3.Se7 Rf8# & 1.Kf8 Kd2 (0-0-0?) 2.Rf7 Rh1 3.Be7 Rh8# 4 a) 1.e1S d3 (d4?) 2.Sxf3 Rf2 3.Sg5 Rf4# b) 1.e1R d4 (d3?) 2.Rxe5 Rg2 3.Rh5 Rg4# 5 1.Sg6 Ra8 (Rb/c8?) 2.Bc8 Ra2 3.Bxg4 Rf2#, 1.Sd7 Rb8 (Ra/c8?) 2.Rg6 Rb2 3.Rxg4 Rf2# & 1.Se6 Rc8 (Ra/b8?) 2.Rg7 Rc2 3.Rxg4 Rf2#. The BS hideaways determine the blocks on g4, which determine the WR routes. 6 1.Bh4 Bd4 2.Bf2 Bxe5 3.Bb6 Bc3#, 1.Qh2 Be3 2.Qf2 Bxf4 3.Qb6 Bxd2# & 1.d1Q Bf2 2.Qg1 Bg3 3.Qb6 Be1# The limitation on the available diagonal-moving pieces seems to make a homogeneously-motivated triple setting impossible; contrast B23/4. 7 1.Rxb8 c6 2.Rb7 cxb7 3.Kb4 b8Q 4.Ka5 Qb5#, 1.Bxc7 c6 2.Bd8 c7 3.Kc5 cxd8Q 4.Rc4 Qd6# & 1.Be7 c6 2.Rd5 Sa8 3.Kc5 c7 4.Kd6 c8Q# (2...S~?) 8 a) 1.Kxd2 Sxf8 (Sf6?) 2.Ke3 h7 3.Kf4 h8Q 4.Kf5 Qf6# b) 1.Rxh7 (Rxd2?) d3 2.Qg7 hxg7 3.Rh2 gxh8Q 4.Rd2 Qf1# Let us call this "experimental". 9 1... hxg3# 1.gxh2 Re8 2.Bd3 Re1 3.Bxc2 Kxc2 4.Rf1 Rb1 5.Rd1 Kxd1 6.Kg1 Ke2# Vertical>horizontal battery switch. 10 1...Bxc7 2.Rb2 Bg3 3.Rb3 axb3 4.Kxg3 b4 ... 8.Kc7 b8Q# 11 a) 1.Rd6 Gc7 2.Rc6 Gc5 3.Rc7 Gc8 4.Rd7 Ge6# & 1.Re7 Ge8 2.Rd7 Gc6 3.Rc7 Gc8 4.Rd7 Ge6# b) 1.Qe6 Ge7 2.Gd8 Ge5 3.Qe7 Ge8 4.Qh4 Gc8# & 1.Qd5 Gc5 2.Qd6 Ge7 3.Gc7 Gc5 4.Qg3 Gc8# 12 1...Qa3# 1.Gd5 3.Kc6 4.Gb7 6.Ke4 7.Gf3 8.Kxf5 10.Kxg3 11.Kf2 12.Gf1 14.Kh1 Qh3#