

NAUJI UŽDAVINIAI Nr.4/2015

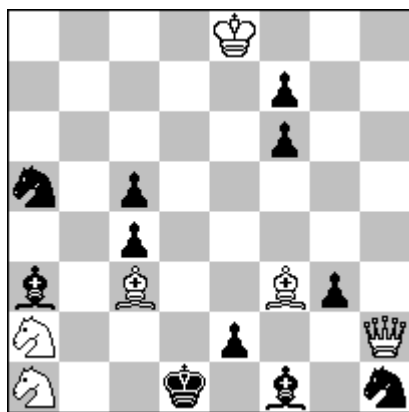
ORIGINALS *** INEDITES *** URDRUCK *** ПУБЛИКУЕТСЯ ВПЕРВЫЕ

Skyrelį tvarko:

Vilimantas SATKUS
Parko g. 2A,
LT-58351 Akademija, Kėdainių rj., Lithuania
vilimantas.satkus@gmail.com

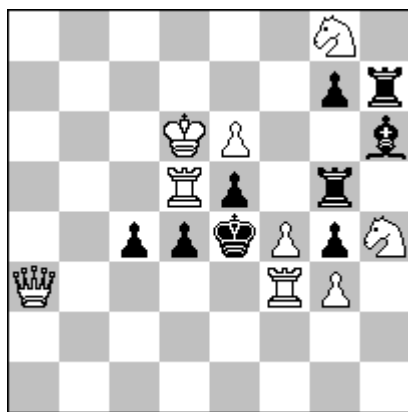
Mūsų gretas papildė rusas Piotras Zabiroschinas (Петр Забирохин), rumunas Georgè Nikolaeskus (Gheorghe Nicolaescu) ir graikas Joanis Kalkavūras (Ιωάννης Καλκαβούρας). *Welcome in „Šachmatija“!*

3214 P. ZABIROCHIN
Sankt Peterburgas, Rusija



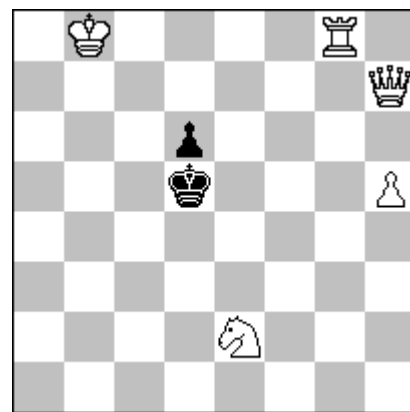
2vv (6 + 11)

3215 E. ABDULLAYEV
Širvanè, Azerbaidžanas



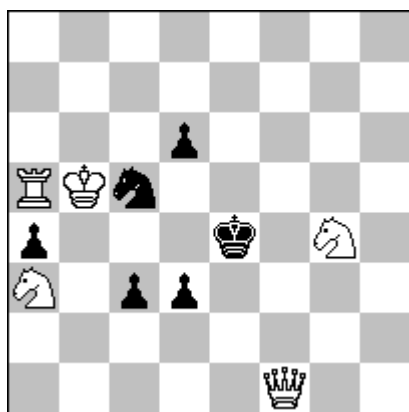
2v... (9 + 9)

3216 P. PETRAŠINOVIĆ
Belgradas, Serbija



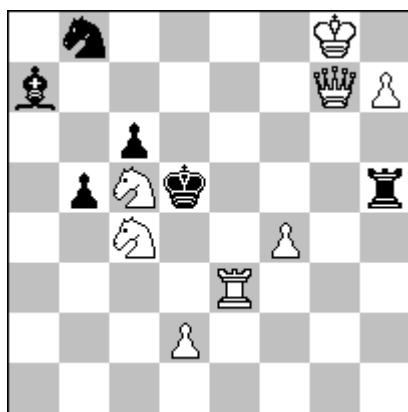
#3 v (5 + 2)

3217 P. PETRAŠINOVIĆ
Belgradas, Serbija



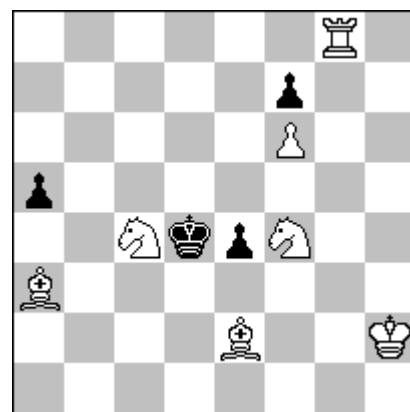
#3* (5 + 6)

3218 A.FICA, Z.LABAI
Praha /Velky Kyras, CZE/SVK



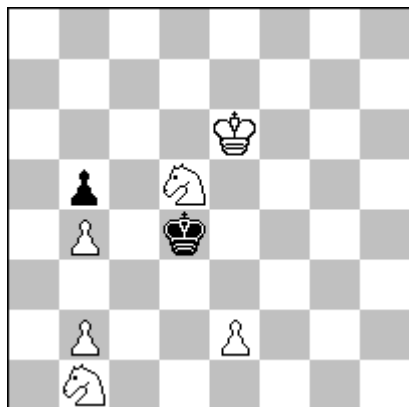
#3 v (8 + 6)

3219 P. PETRAŠINOVIĆ
Belgradas, Serbija



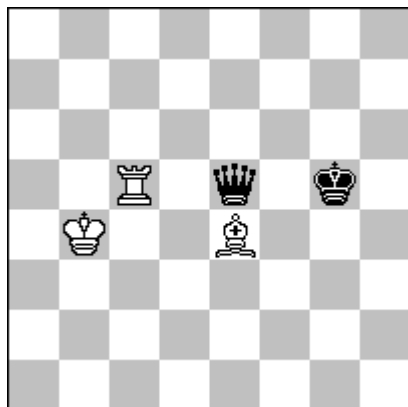
4 (7 + 4)

3220 Z. LABAI
Velky Kyras, Slovákija



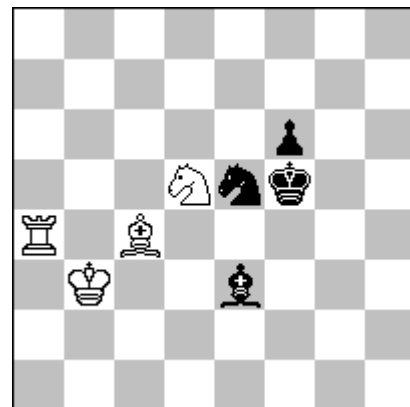
5 b)K d4→c4 (6 + 2)

3221 E. ABDULLAYEV
Širvanë, Azerbaidžanas



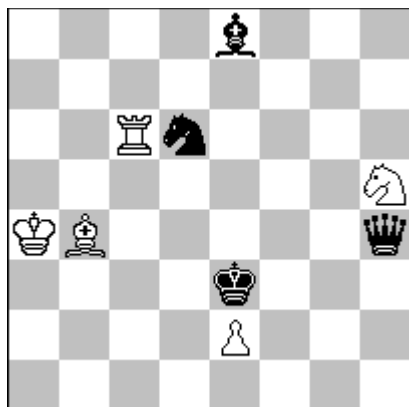
h # 2 2.1.1.1 (3 + 2)

3222 N. ZUJEVAS
Klaipėda



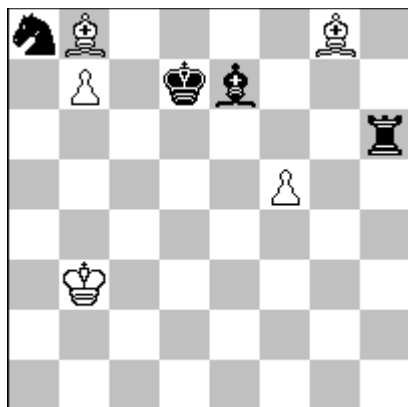
h # 2 2.1.1.1 (4 + 4)

3223 A. VILKAUSKAS
Šilutė



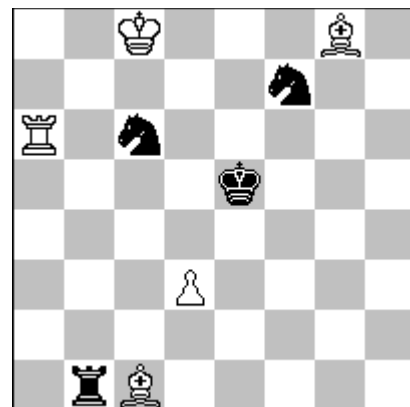
h # 2 2.1.1.1 (5 + 4)

3224 D. GRINČENKA
Jasinovataja, Ukraina



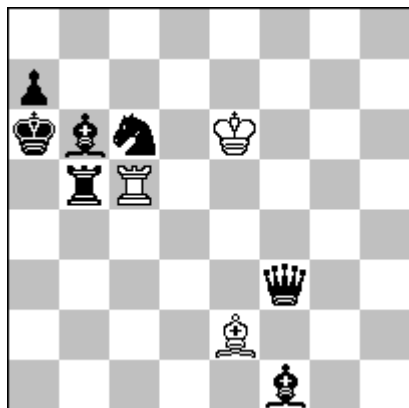
h # 2 (5 + 4)
b)mate matuojanti figūra juoda

3225 C. JONSSON
Skerholmenas, Švedija



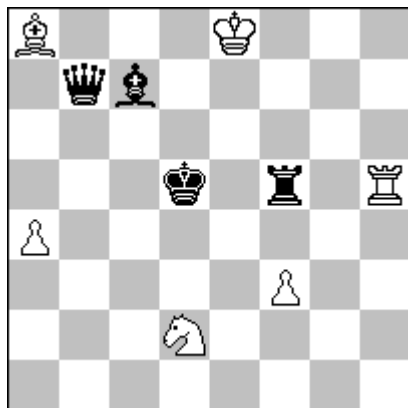
h # 2 2.1.1.1 (5 + 4)

3226 A. ONKOUD
Stenas, Prancūzija



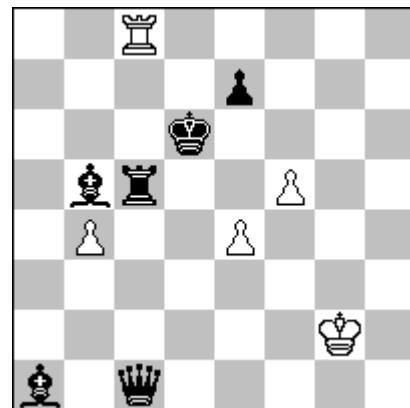
h # 2 2.1.1.1 (3 + 7)

3227 A. VILKAUSKAS
Šilutė



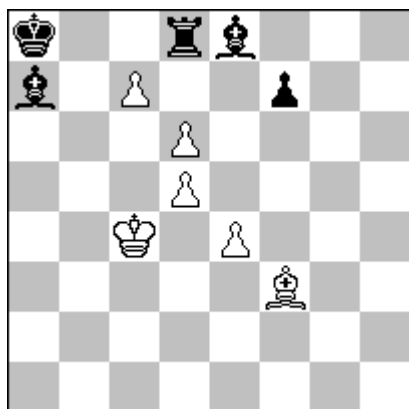
h # 2 b)a4→g3 (6 + 4)

3228 S. PARZUCH
Legionovas, Lenkija



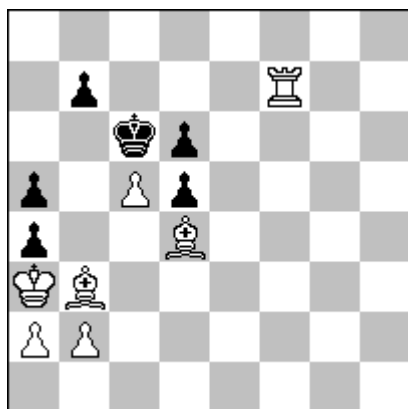
h # 2 b)f5→e6 (5 + 6)

3229 S. ŠALETIĆ
Belgradas, Serbija



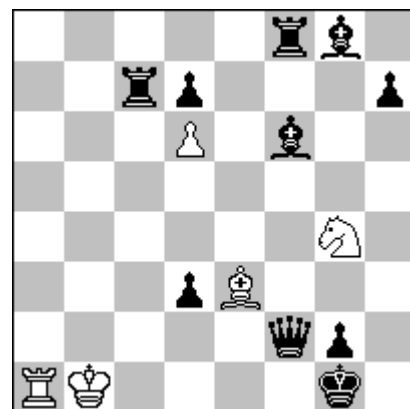
h # 2 3.1.1.1 (6 + 5)

3230 S. ŠALETIĆ
Belgradas, Serbija



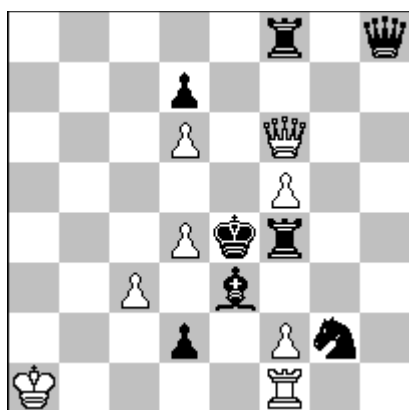
h # 2* (7 + 6)

3231 A. VILKAUSKAS
Šilutė



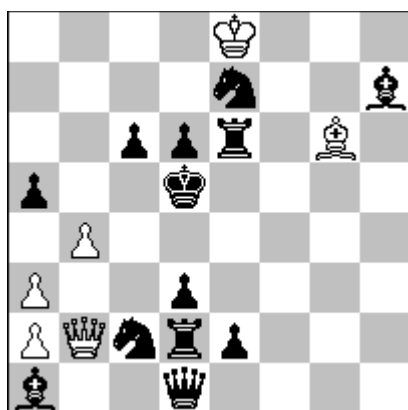
h # 2 2.1.1.1 (5 + 10)

3232 A. ONKOUD
Stenas, Prancūzija



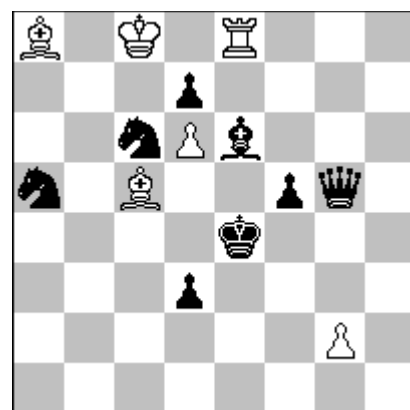
h # 2 b)-Bf4 (8 + 8)

3233 I. KRAMPIS
Liepoja, Latvija



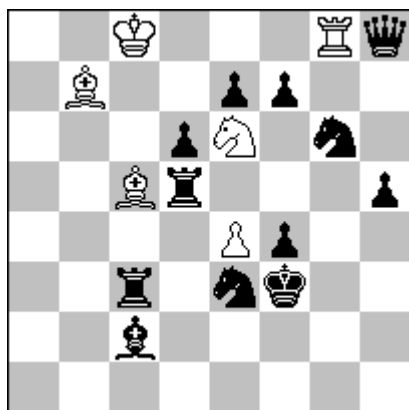
h # 2 2.1.1.1 (6 + 13)

3234 C. JONSSON
Skerholmenas, Švedija



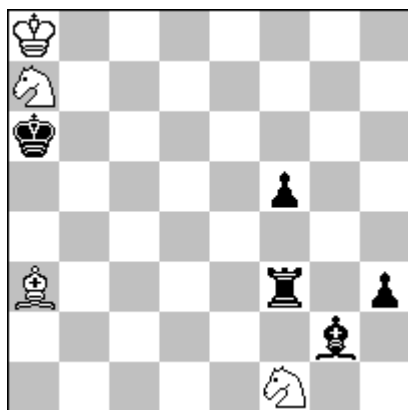
h # 2,5 0.2.1.1.1.1 (6 + 8)

3235 A. ONKOUD
Stenas, Prancūzija



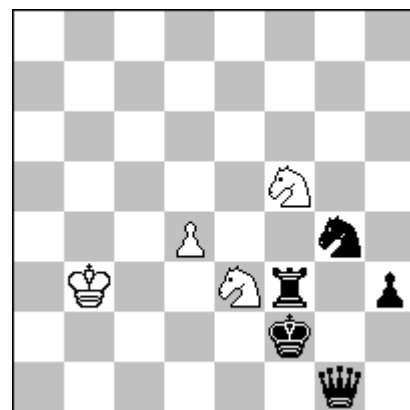
h # 2,5 0.2.1.1.1.1 (6 + 12)

3236 N. ZUJEVAS
Klaipėda



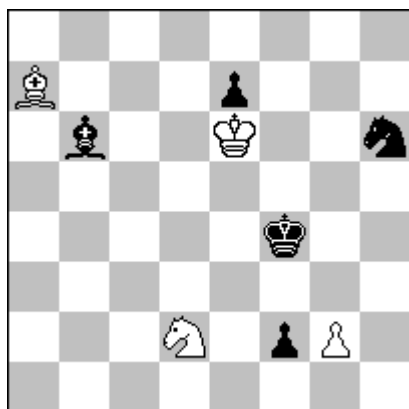
h # 3 2.1.1.1.1.1 (4 + 5)

3237 C. JONSSON
Skerholmenas, Švedija



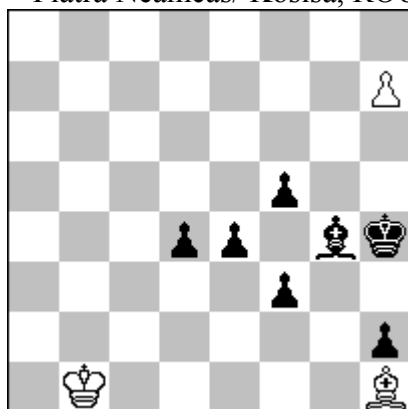
h # 3 b)Kb3→f8 (4 + 5)

3238 V. BARSUKOV
Sankt Peterburgas, Rusija



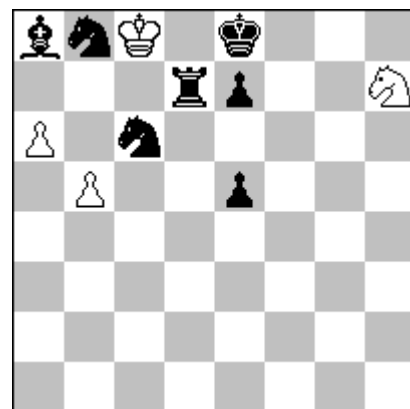
h # 3 b)f2→c7 (4 + 5)

3239 M. CIOFLÂNCĂ,
G. NICOLAESCU
Piatra Neamcas/ Kosisa, ROU



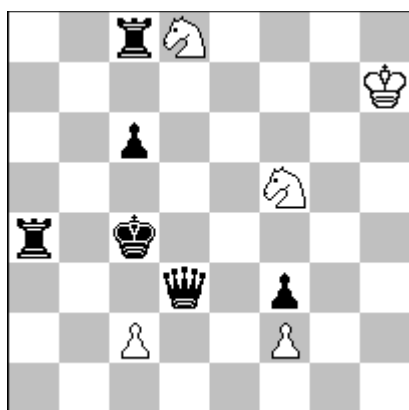
h # 3 2.1.1.1.1.1 (3 + 7)

3240 S. ŠALETIĆ
Belgradas, Serbija



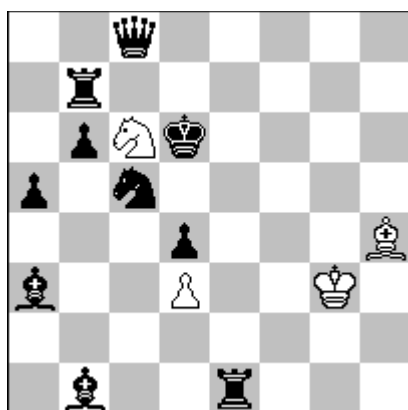
h # 3 2.1.1.1.1.1 (4 + 7)

3241 A. VILKAUSKAS
Šilutė



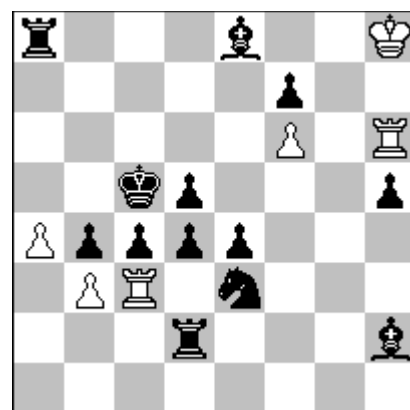
h # 3 b)f2→c5 (5 + 6)

3242 A. VILKAUSKAS
Šilutė



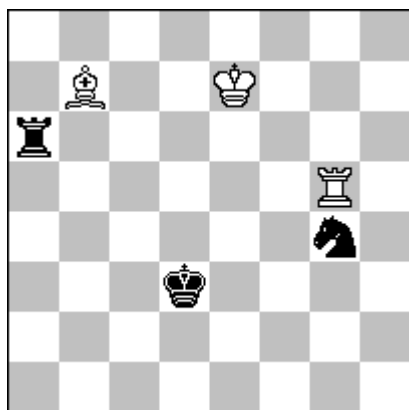
h # 3 2.1.1.1.1.1 (4 + 10)

3243 S. AŠKINIS
Vilainiai, Kėdainių rj.



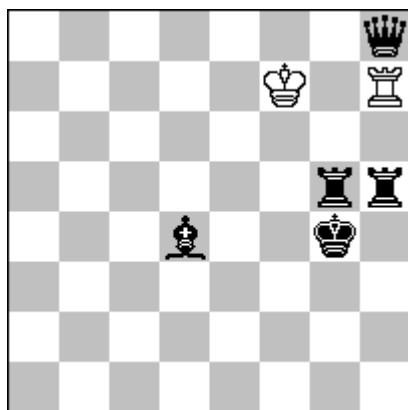
h # 3 b)c3bR (6 + 13)

3244 M. RIMKUS
Kriūkai



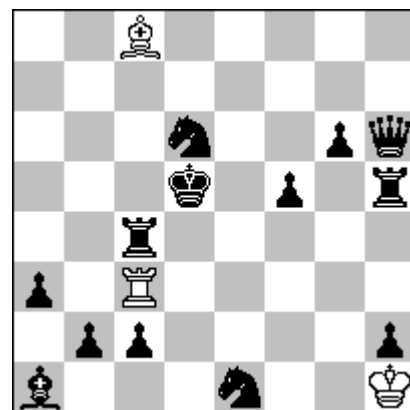
h # 3,5 0.2.1... (3 + 3)

3245 J. KALKAVŪRAS
Graikija



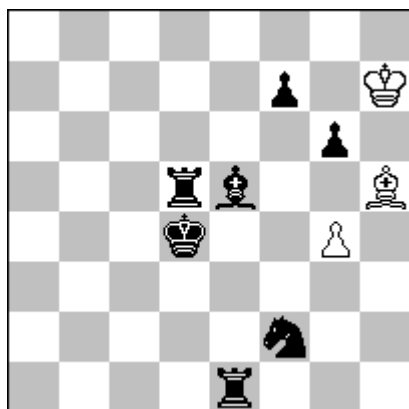
h # 3,5 (2 + 5)

3246 E. FOMIČIOV
Šatki, Rusija



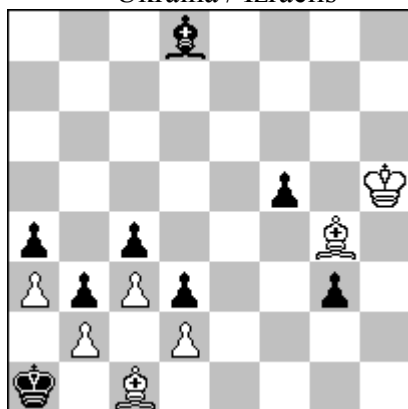
h # 3,5 b)Bh5→c1 (3 + 13)

3247 V. BARSUKOV
Sankt Peterburgas, Rusija



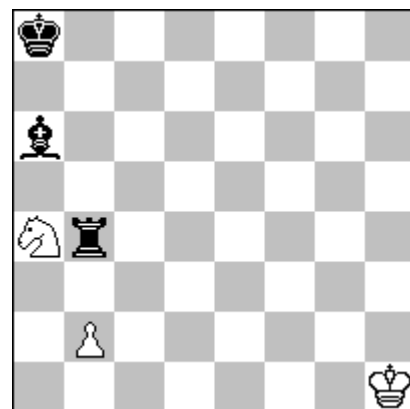
h # 4 b)+bpf6 (3 + 7)

**3248 V. ŠEVČENKA,
L. LIUBAŠEVSKIJ**
Ukraina / Izraelis



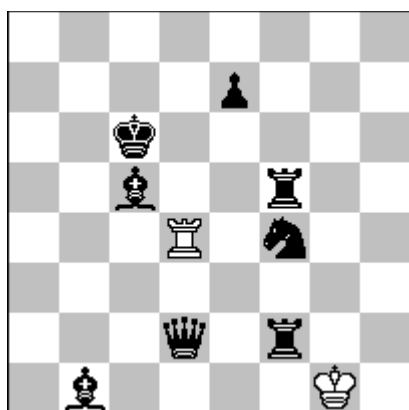
h # 4,5 b)Ka1→c2 (7 + 8)

3249 M. RIMKUS
Kriūkai



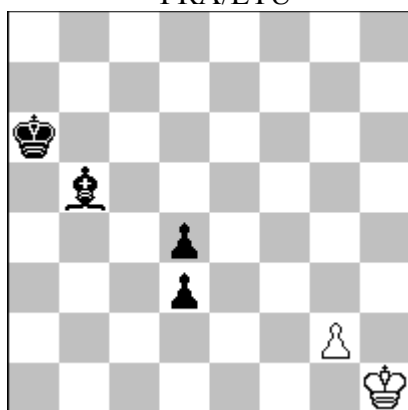
h # 5 2.1.1... (3 + 3)

3250 M. RIMKUS
Kriūkai



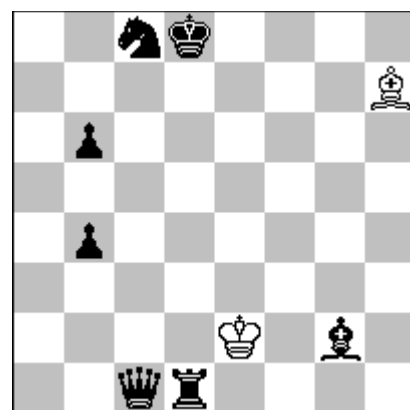
h # 5 2.1.1... (2 + 8)
b)Zf4→e3 c)b+ Vd2↔Ze3

3251 P. PIET, M. RIMKUS
Saint Jean de Braye / Kriūkai,
FRA/LTU



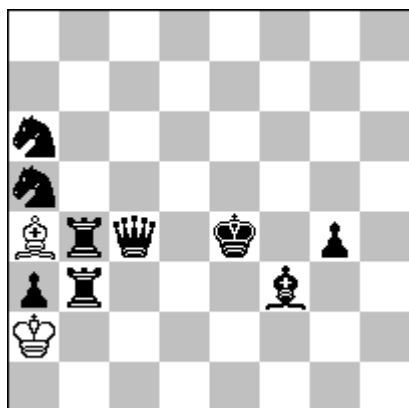
h # 6 b)+bpb3 (2 + 4)

3252 V. BARSUKOV
Sankt Peterburgas, Rusija



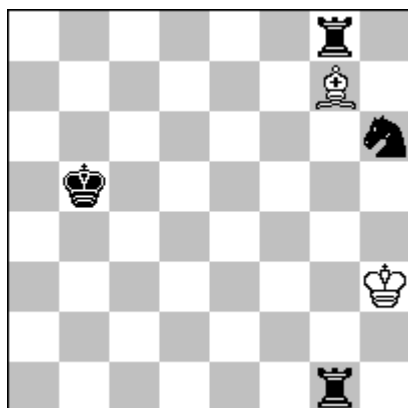
h # 6 b)Zc8→b4 (2 + 7)

3253 M. RIMKUS
Kriūkai



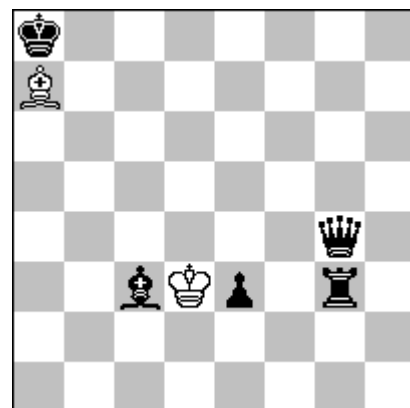
h # 7 2.1.1... (2 + 9)

3254 M. RIMKUS, J.CARF
LTU / FRA



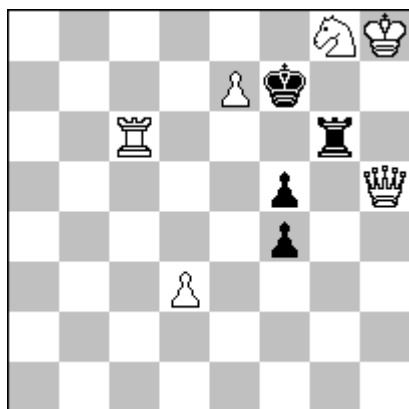
h # 7,5 b)Rg7→g6 (2 + 4)

3255 M. RIMKUS
Kriūkai



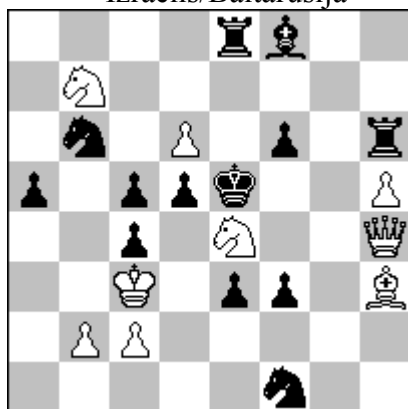
h # 9 (2 + 5)

3256 V. SURKOV
Maskva, Rusija



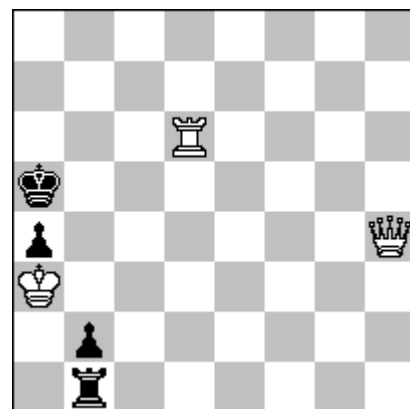
s # 6 (6 + 4)

**3257 L. MAKARONEC,
V. VOLČEK**
Izraelis/Baltarusija



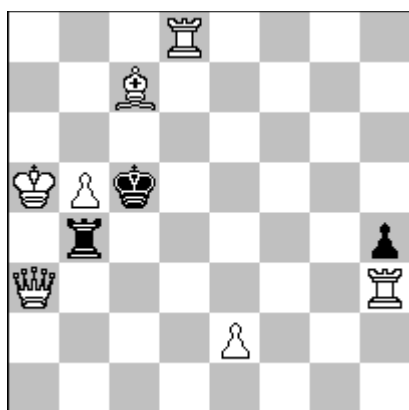
s # 6 (9 + 13)

3258 I. BRIUCHANOV
Čaplinka, Ukraina



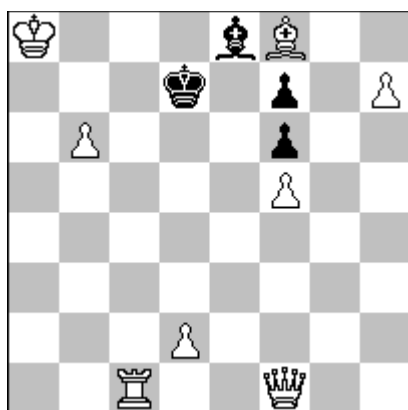
s # 7 (3 + 4)
b)Vh4→h3 s # 6

3259 M. BABIĆ
Belgradas, Serbija



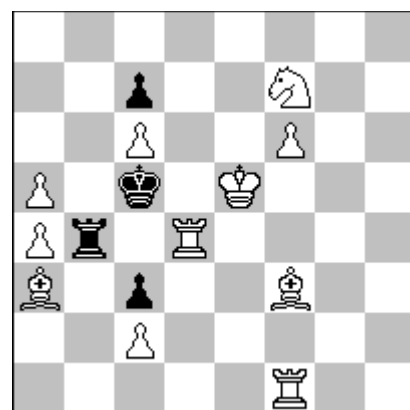
s # 8 2 sprend (7 + 3)

3260 M. BABIĆ
Belgradas, Serbija



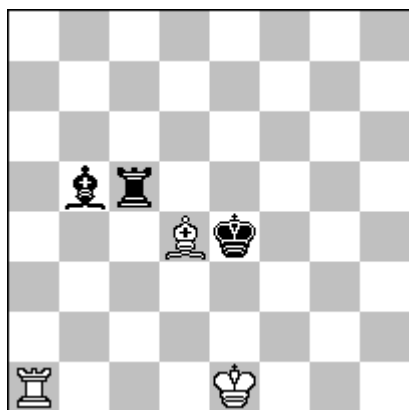
s # 9 (8 + 4)

3261 M. BABIĆ
Belgradas, Serbija



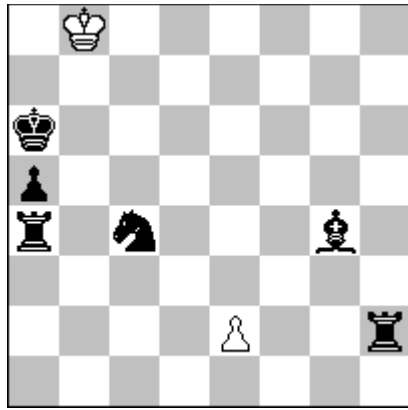
s # 10 (11 + 4)

3262 A. BIČIUŠAS
Klaipėda



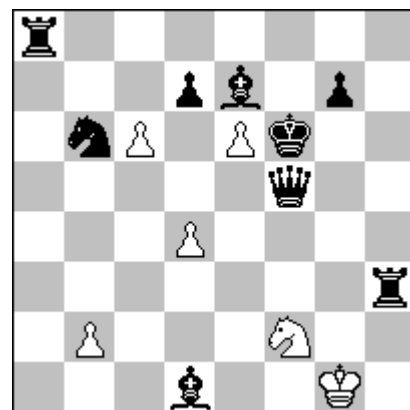
h # 2 b) -Rb5 (3 + 3)
Kerti&Eini

3263 P. TRITTEN
Ganji, Prancūzija



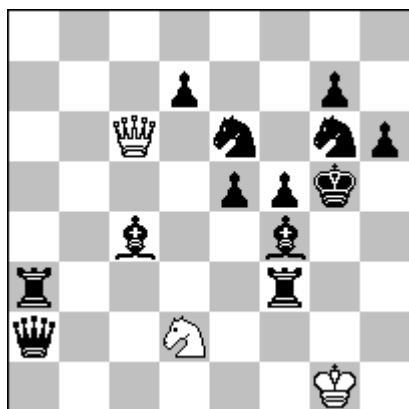
h # 2 4.1.1.1 (2 + 6)
Kirkė gegutė

3264 Vilimantas SATKUS
Akademija, Kėdainių rj.



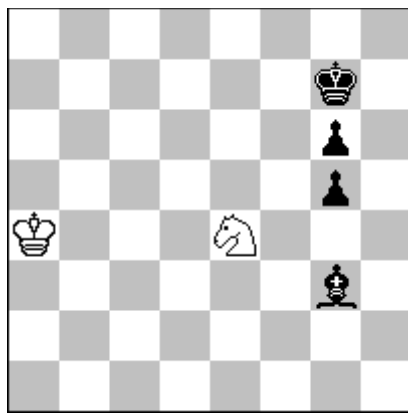
h#2 b)d7→h4 (6 + 9)
Kerti&Eini

3265 D. GRINČENKA
Jasinovataja, Ukraina



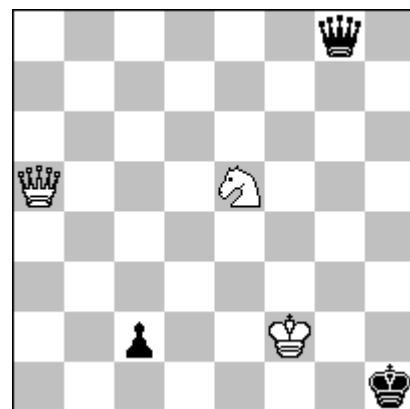
h # 2 b) f5→h3 (3 + 13)
Kerti&Eini

3266 A. BIČIUŠAS
Klaipėda



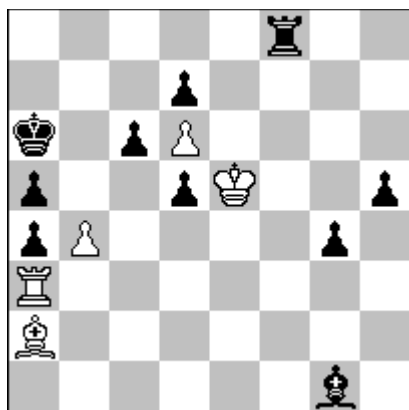
h # 4 b) g3→h4 (2 + 4)
Einstein, Kirkė

3267 A. ARMENI
Roma, Italija



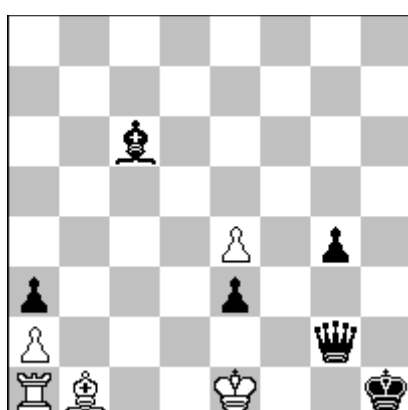
hs # 2 PWC (3 + 3)
b)Vg8→h3 c)toliau Va5→a3

3268 A. ARMENI
Roma, Italija



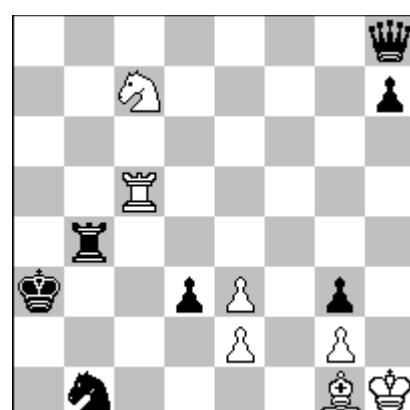
hs # 3,5 PWC (5 + 10)
b)Ka6→h4

3269 A. POPOVSKI
Skoplė, Makedonija



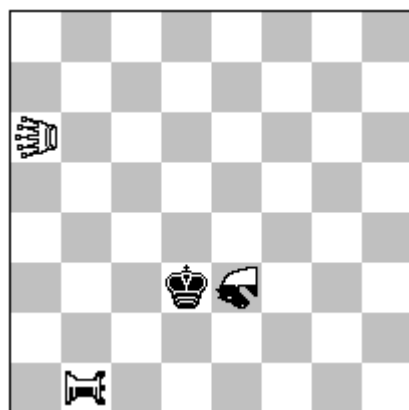
Reci-h # 3 2.1.1.1.1.1 (5 + 6)

3270 V. BARSUKOV
Sankt Peterburgas, Rusija



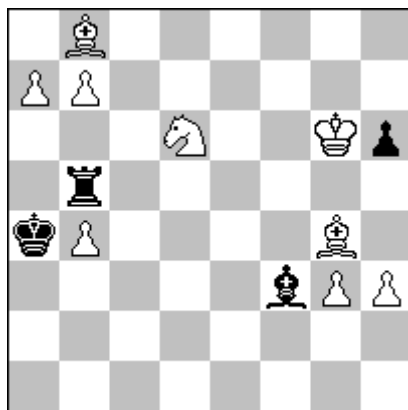
s # 4 b)c5→e5 (7 + 7)
Max

3271 K. ŠOULIVÝ
Praha, Čekija



h # 2 3.1.1.1 (1 + 1 + 2)
Superkirkė (a6 EA, b1 DA, e3 Em)

3272 Vilimantas SATKUS
Akademija, Kėdainių rj.



ser-s # 10 (9 + 4)

**Gerbiami skaitytojai,
sprendimus, komentarus,
pastabas ir pasiūlymus iki
2016 03 31 siųskite
Mečislovui Rimkui**

**Pušyno g. 1-2,
LT-71215 Kriūkai,
Šakių rj.,
LITHUANIA**

*Dear chessfriends,
Please send your solutions and
comments by 31 March 2016 to
Mečislovas RIMKUS*