

# Award of 33rd TT Chess Composition Microweb C 10.10.2013 - not awarded

---

(remarks to some non-awarded problems by Michal Dragoun, selection of comparison problems added by Juraj Lőrinc)

1 (Kf7-Ke4): The second bQ has technical use here. But even so the play is not balanced, 3.Sd5 serves as block, 3.S6d7 as unguard. Motivation for B2 is not absolutely analogous too.

2 (Kb1-Kg8): Use of promoted pieces without any sense: -a1, +bpa3 C+.

3 (Ka1-Ke5): Simple strategy. Twin looks interesting, but in fact is poor one.

7 (Kh7-Kb2), 26 (Kh2-Ka8): Multiple active sacrifice of black pieces allowing long walk of white King (and mate), but problem PDB [P1236906](#) without promoted force is quite close.

8 (Kg8-Kf4): Cycle of white moves, but not counting three white Knights, there is no special addition.

9 (Kg5-Kg1): Cyclic exchange of places of both four white and black pieces. I don't know, if it is record achievement, but even in such case no interplay disturbs me too much.

13 (Ka7-Kc5): Compare PDB [P0548012](#) or older but cooked P0548034.

16 (Ke8-Kg5): There are dozens of problems with bQ standing on future black Grimshaw square. Usually the first black moves are blocks or hideaways, but the same motivation as in 16 was already realized too (PDB P0580164) and there is no special need for promoted force.

20 (Ke7-Ke5): Albino + interferences of black lines. However this combination in my point of view doesn't justify use of so much promoted pieces.

21 (Ke5-Kb1): Anticipated by PDB [P0557306](#). Can be compared to P1003086 too.

24 (Kb3-Kd4): Compare PDB [P1100971](#) and P0559589.

27 (Kd2-Kc8): Almost Oudot theme - but without promotions...

28 (Ke5-Ke3): Compare PDB P1074932 and especially [P1266190](#).

30 (Ke4-Ka6): Two excelsiors and Knight promotions. Promoted Sb7 and Sb8 are only for miniature, with incarcerated white King it is possible to use Bb7 and Qb8 as well.

31 (Kf2-Kc6): Threefold exact echo (Rd1 can be queen as well) with interference of black rooks for walk of wK in all solutions. But number of repeated moves is really too high.

34 (Ka4-Kh2): Repetition of B2 is unacceptable. In addition bRg4 and two pawns can be used instead of bQ.

35 (Kc3-Ke5): Fourfold echo with twins, but with black King twice on the same square too. Can be compared to PDB P0581506.

36 (Ka1-Kf1), 49 (Kh7-Kf1): Mating pictures and pattern of three white Knights is known from PDB P0507444. Added first move in 36 is not enough for distinction and promotions in 49 even less.

37 (Kg6-Kf3): Cyclic function exchange of white Knights, but black play is too simple and twins are poor.

41 (Ke4-Ke6): Compare PDB P0513200, [P1002845](#).

42 (Kh2-Ke4): White cycle with blocks of initial black King's square. It is well known and can be easily achieved without promoted pieces and twins too.

44 (Kf8-Ke5): The content doesn't justify technical promoted Queen, in my opinion.

45 (Kb3-Kf5): Whole play is well known (compare e.g. PDB [P0528990](#), P0518520), only motivation of the first white move can differ. However not original enough.

46 (Ke7-Ke5): Looks like a lighter version of 20 (without albino and with less promoted pieces, but with the same reservations).

53 (Kg3-Ke4): Threefold echo, but again with repetition of moves Kg4 and Kg5.

55 (Kc4-Ke5): Two echo mates with line openings for black Rook, but for distinction I would like twinless setting.

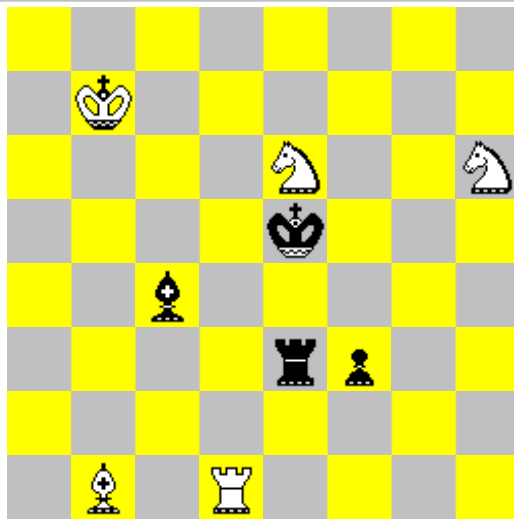
57 (Kb4-Kf8): Three times the same black play (and only by King), white play is not very exciting too. (If someone likes to use so called "constant" - the same play - and declare it as advantage, please don't use tourneys with me as judge.)

58 (Kf4-Kd2): Two black pieces from halfbattery capture white pawns on mating squares and as tempo moves selfpin themselves. BQc1 is necessary for guard of mates by Ba5, but there are further problems for comparison: PDB [P0539486](#) (with two alternate pinlines) and P1276343 (unfortunately with bad white economy).

Some problems used promoted pieces to create apparently absolute exact chameleon echoes. I awarded some of them, but usually it is only illusion. E.g. 5 (Kd3-Kb4) is sound with Bd6 and Re5 too, but then is clear that blocks in single solutions are not exactly the same. In 10 (Kc1-Kd5) can be B on d6.

<b>Reinhardt Fiebig</b> 14934 Die Schwalbe 08/2011	
	1...Ba1 2.Qb2+ Kxb2 3.c3+ Kxc3 4.d4+ Kxd4 5.Be5+ Kxe5 6.Rf6 Kxf6 7.Rf7+ Kxf7#  White-black Bristol is followed by sacrifice of 6 black units guarding mating line.
h#6,5 (2+9)	

<b>Attila Benedek</b> New Year greeting 1984	a) 1.Rd3 Kc6 2.Ke4 Re1#
---	-------------------------

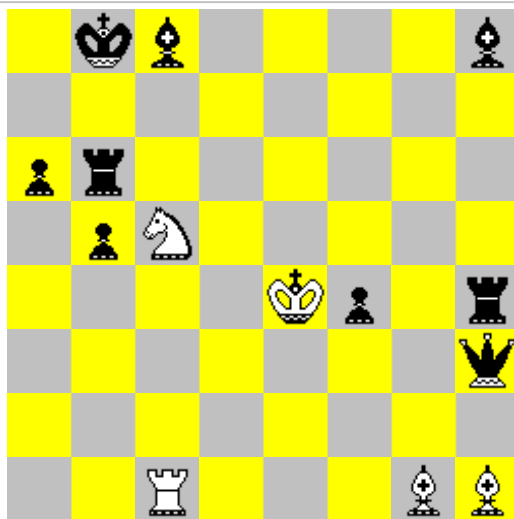


h#2 (5+4)  
b) white Pf3

b) 1.Bd3 Sf7+ 2.Kd5 Ba2#

Two of three pieces forming the pin on the line enter it - pinned piece in B1 and bK in B2. There is also Grimshaw on d3 and the play is closed by pin model mates.

**Venelin Alaikov**  
feenschach 1971



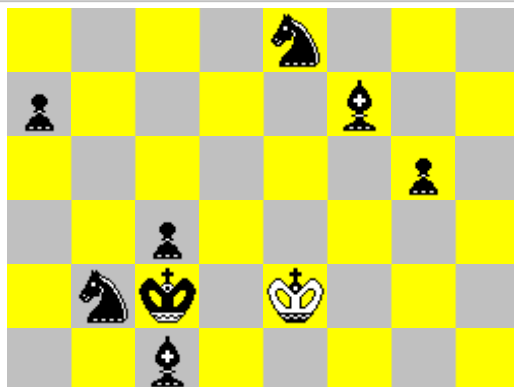
h#2 (5+9)  
2.1.1.1

1.Rf6 Ke5 2.Be6 Sxa6#

1.Bg4 Kxf4 2.Re6 Sd7#

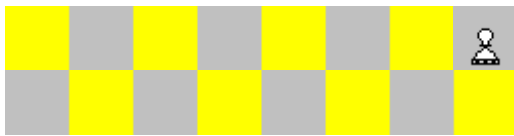
The first black moves have two functions - they both close black line, allowing W1 by wK, and also both are critical over e6 for the mutual B/R interference on e6.

**Yaakov Mintz**  
Ideal Mate Review 1992



1.a5 h4 2.a4 h5 3.a3 hxg6 4.a2 gxf7  
5.a1S fxe8S 6.Sb3 Sd6#

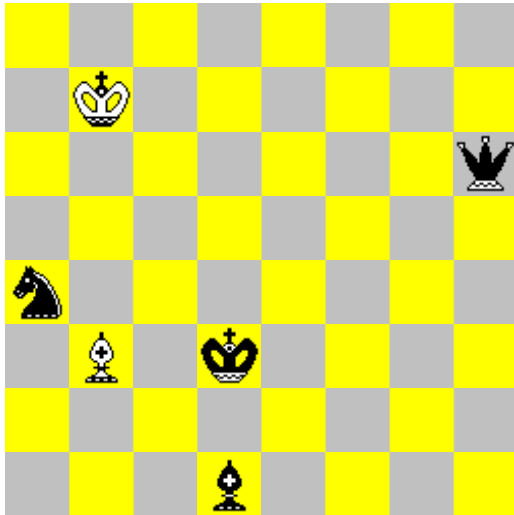
Not quite theme 100\$ thanks to the added last move, making the achievement considerably easier.



h#6 (2+8)

**Viktoras Paliulionis**

3058 Best Problems 66 - IV 2013

h#7 (2+4)  
2.1.1...

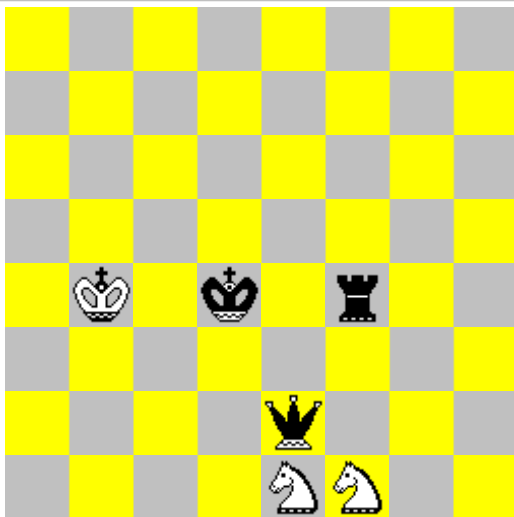
1.Sb2 Ba4 2.Qh1+ Kb6 3.Bb3 Kc5  
4.Kc2 Kd4 5.Qa1 Ke3 6.Kb1 KQ2  
7.Ba2 Bc2#

1.Qc1 Bc4+ 2.Kd2 Kc6 3.Sc5 Kd5  
4.Sb3 Ke4 5.Bc2+ Kf3 6.Kd1 Kf2  
7.Sd2 Be2#

Very precise play in two solutions  
finished by mono echo.

**Carlos Lago**

4th Prize StrateGems 2001

h#3 (3+3)  
3.1.1.1.1.1

1.Qc4+ Ka3 2.Kc3 Sd2 3.Rd4 Sb1#

1.Qe5 Sg2 2.Ke4 Kc4 3.Rf5 Sd2#

1.Qe6 Sg3 2.Ke5+ Kc5 3.Rf6 Sd3#

Exact threefold echo of well known  
checkmate with nonstandard  
translations of mating picture.

**János Csák**

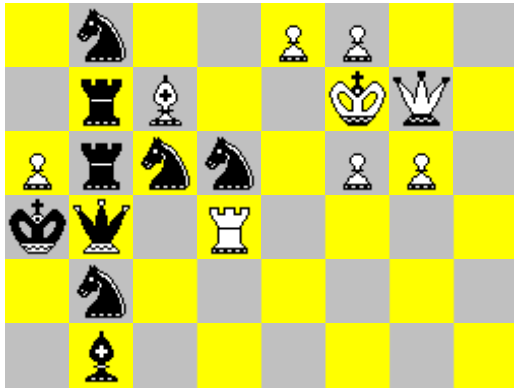
Probleemblad 1986



a) 1.Rxc5+ Ke4 2.Rxa4 Qxc5#

b) 1.Bxd3+ Kg5 2.Qxa4 Qxd3#

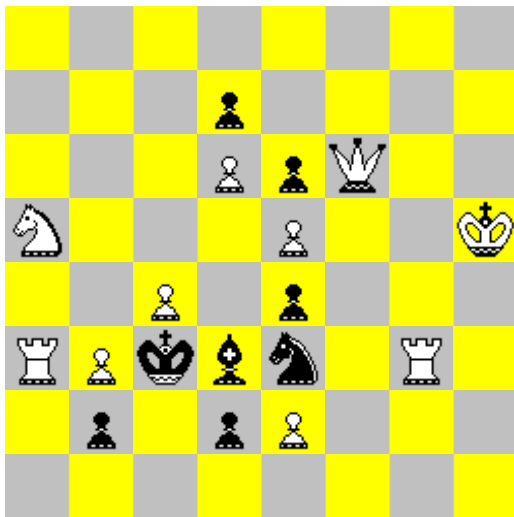
Two white pieces (Bc5 and Rd3) both  
pin and are pinned. One of them  
remains in this status in spite of wK



h#2 (10+12)  
b) g5 -> g6

movement, but the other is captured and then replaced by wQ. Double-pin mates are logical consequence of the strategy.

**Mario Parrinello**  
2nd HM Springaren 1995



h#2 (10+8)  
2.1.1.1

1.Bxc4 Qxe6 2.Bxb3 Qc4#

1.Sxc4 Ra4 2.Sxe5 Rc4#

Black piece from the halfpin first annihilates Pc4 to allow the mating move and then, due to the lack of black moves, has to selfpin. Double-pin mates.

Comments to [Juraj Lörinc](#).

Back to [main page of Chess Composition Microweb](#).