

13th Japanese Sake Tourney

Theme: H#2 with the new condition Face-to-Face (hereafter abbreviated as FTF). Any other fairy pieces/conditions are not allowed.

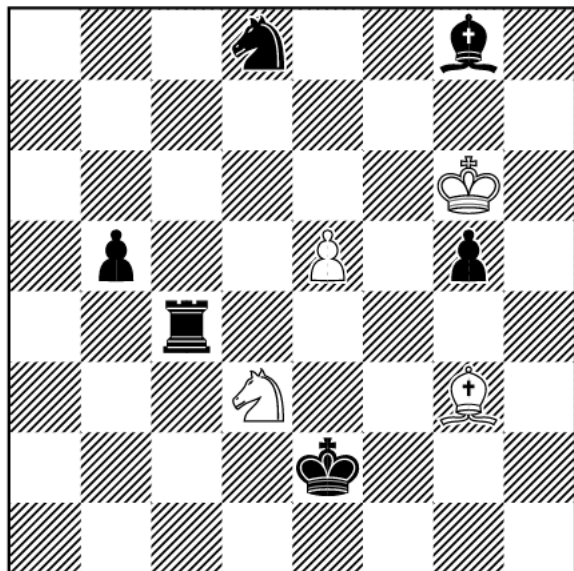
Judges: Tadashi Wakashima, Yuji Kikuta and Masato Yoshii

Definition

Face-to-Face: When a white piece is just one rank below a black piece on the same file, they exchange their roles. P on the first rank cannot move unless it is given a power to move by FTF. Any piece can make an en passant capture when it is given a power to move as P by FTF.

We received 33 entries from 18 composers. Although the composers struggled very hard to present their ideas without using any computer-testing programs, the general standard is fairly good. The awarded problems below are all computer-tested now thanks to Thomas Maeder who implemented it in Popeye. I hope that FTF will be explored further by many composers.

Ricardo de Mattos Vieira
Batumi 2013 Sake 1st Prize



H#2 4 sols

(4+6)

FTF

1.Rd4 Sc3 2.Se6 Be1#

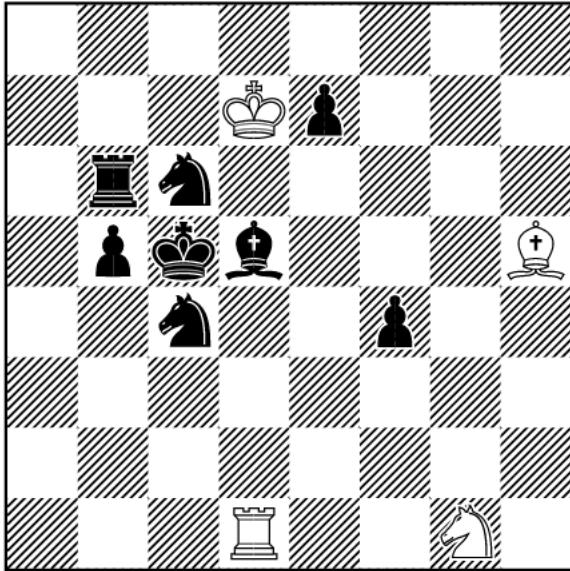
1.Rg4 Be3 2.Be6 Se1#

1.Se6 Se1+ 2.Kd4 d3#

1.Be6 Be1+ 2.Kg4 g3#

The first pair of solutions makes a fine picture of mating positions, exchanging wB and wS. In the second pair, B2 and W2 become B1 and W1 (reversed). Very pleasing HOTF and an impeccable construction.

Kostas Prentos
Batumi 2013 Sake 2nd Prize

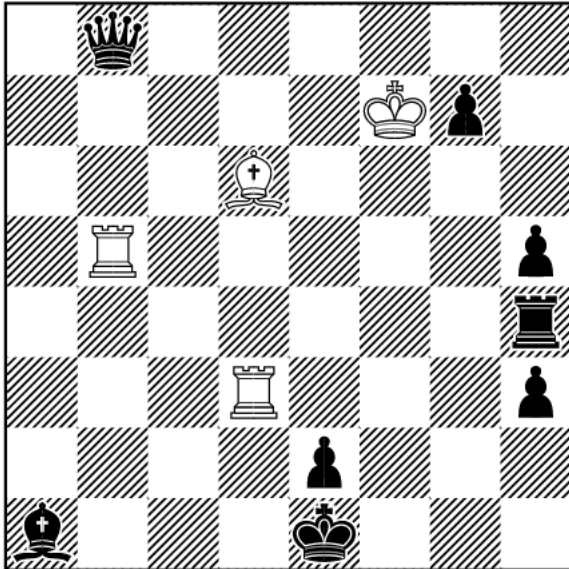


H#2 b)Kd7→c7 (4+8)
FTF

- a) 1.Sb4 (2.Sd4?) Se2 2.Rh6 Sd4#
- b) 1.Sd4 (2.Sb4?) Bf7 2.Bg2 Rd3#

Many entries tried to show FTF specific orthogonal/diagonal pinmates, but this is the best. Particularly noteworthy is the subtle twinning with dual avoidance effect, which is revealed only after the mating moves (Black pinned pieces must not give check to wK).

Borislav Gadjanski
 Batumi 2013 Sake 3rd Prize



H#2 2 sols

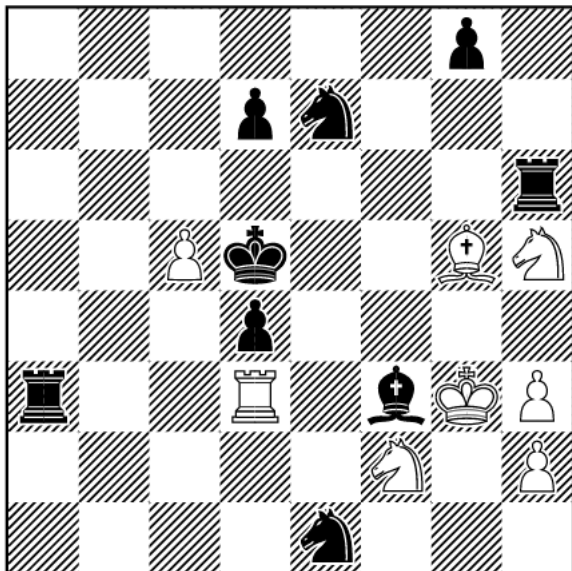
(4+8)

FTF

1. Bf6 Bc5 2.Qe5 Rb1#
1. Ra4 Rf5 2.Qb4 Bg3#

FTF specific strategy of Holzhausen interferences, preventing the future defense 2...Bb2 and 2...Rg4. Black cannot block the f2 square by Ba1 because of the presence of wRd3. If there were some FTF moves in the solutions, then it would be placed higher.

Andy Ooms
Batumi 2013 Sake 4th Prize



H#2 2 sols

(8+9)

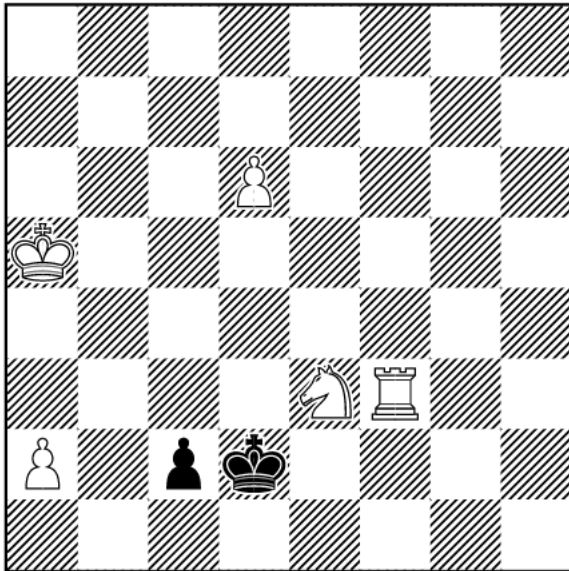
FTF

1. Bg1 Se4 2.Sf5+ Bf4#

1. Sc7 Be7 2.Be5+ Se4#

wS/bB and wB/bS mating positions are tried by several composers, but this daring attempt shows them as cross-checks and deserves prize in spite of many cook-stoppers.

Bjørn Enemark
Batumi 2013 Sake 1st HM



H#2 2 sols

(5+2)

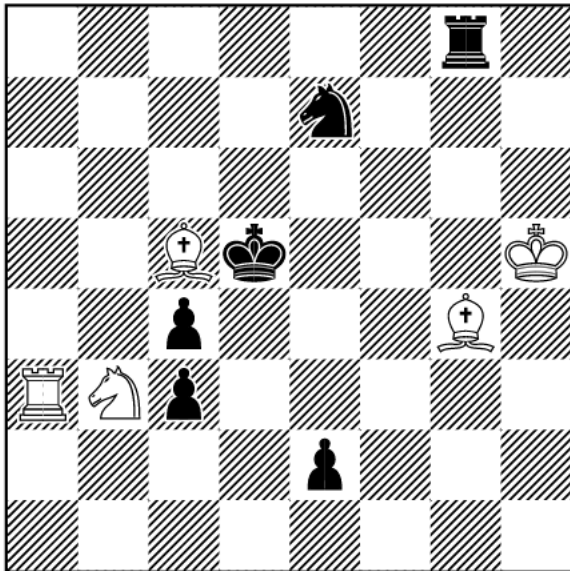
FTF

1.Kc3 Sxc2+ 2.Kd5 Sd4#

1.c1=B Rf4 2.Ba3 Sd1#

Picturesque monochrome echo, catching FTF-transformed Knight-King.

Kostas Prentos
Batumi 2013 Sake 2nd HM

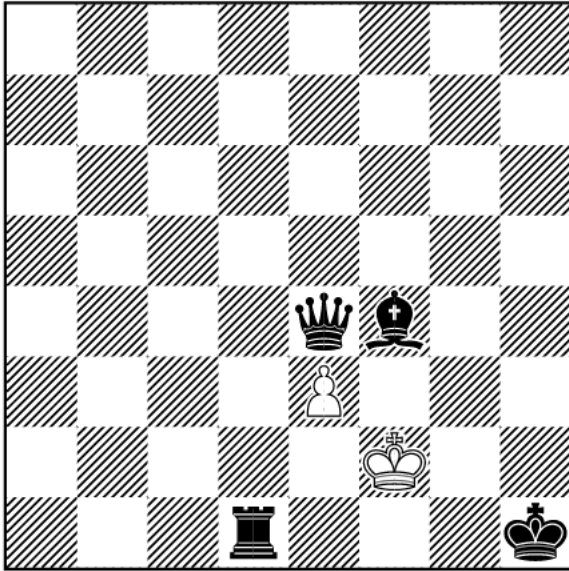


H#2 b) Bg4→f8 (5+6)
FTF

- a) 1.Rg5 Bd4+ 2.Kf3 Sd2#
- b) 1.Sc6 Sd4+ 2.Kb4 Ra4#

FTF specific pinmates. Black cannot capture 3.Rxd2?/Sxa4? because Bg4 and Bc5 return to the normal Bishops. It's a pity b) does not end in double-pinmate.

Gasper J. Perrone
Batumi 2013 Sake 3rd HM



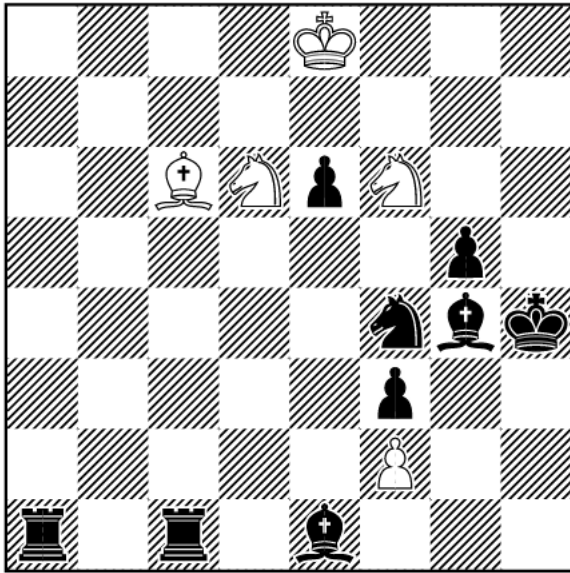
H#2 2 sols
FTF

(2+4)

1. Bh6 g5 2.Qh7 gxh6#
1. Bh2 e2 2.Qe5 e4#

We love so much the simplicity of this problem. The waiting W1 and the double-step mating move in the second solution add a humorous touch.

Hans Peter Rehm
 Kjell Widlert
 Batumi 2013 Sake 4th HM

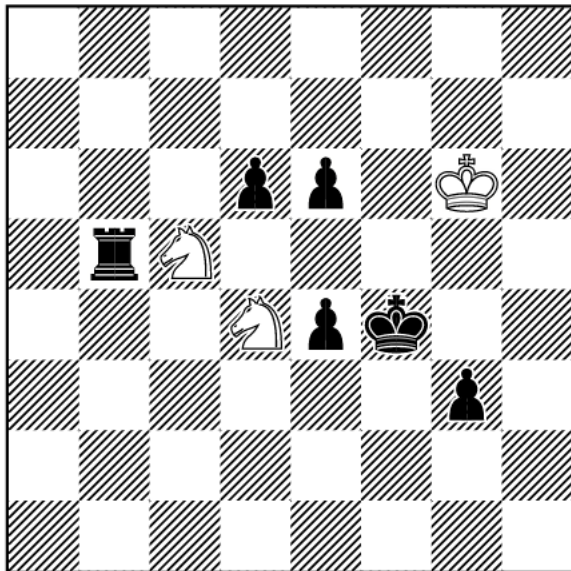


H#2 b)Sd6→h1 (5+9)
 FTF

1. Rc5 Sc4 2.Bh3 Bxf3#
1. Ra5 Bc4 2.Sh3 Sg3#

Again wS/bB and wB/bS mating positions as the 4th prize winner, but perfectly done with the exchange of roles between wB/wS and also bB/bS.

Francesco Simoni
Batumi 2013 Sake 5th HM



H#2 2 sols

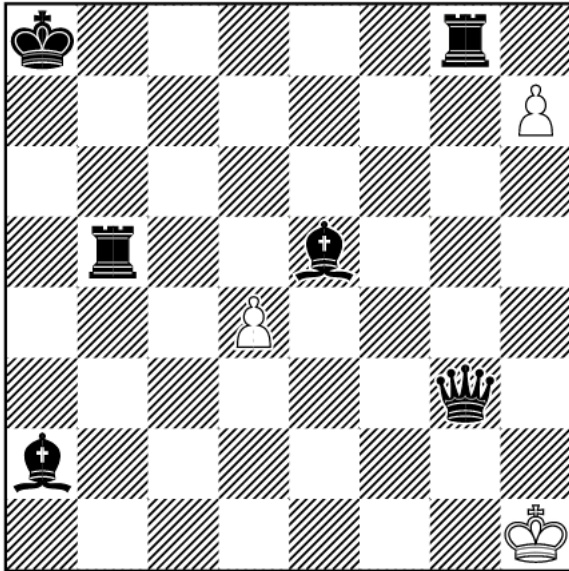
(3+6)

FTF

1. Rb6 Sb5 2.Ke5 Sd3#
1. Kg4 Sxe4 2.Rd5 Sf2#

Battery formations and rare chameleon echo in which the final bK positions are Knight-move apart.

Thomas Maeder
Batumi 2013 Sake 2nd Comm



H#2 2 sols

(3+6)

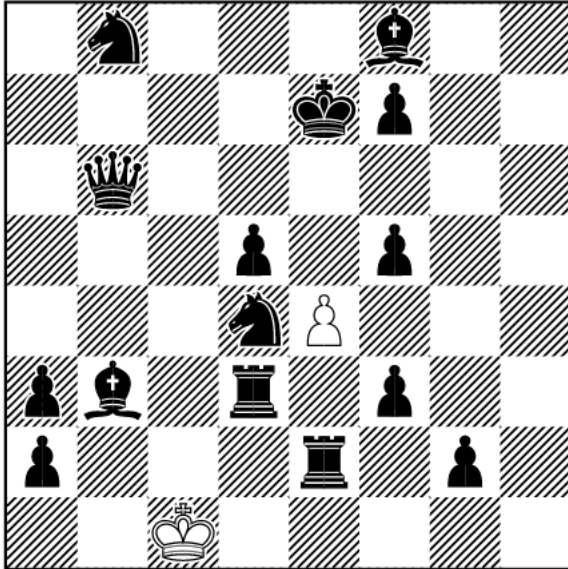
FTF

1. Bh8 e4 2.Bd5 a7#

1. Rd5 h4 2.Rh7 a7#

Nice exchange of roles between RB pairs and also wPs with the motivation of preventing checks anticipatorily.

Mario Parrinello
Batumi 2013 Sake 3rd Comm

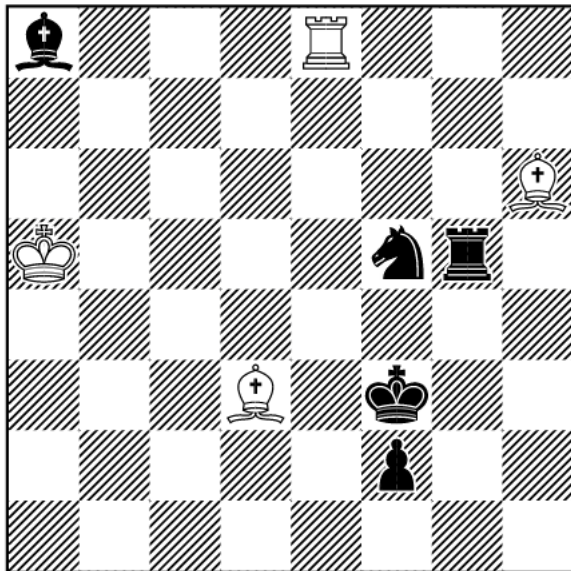


H#2 3 sols (2+15)
FTF

- 1. Rc2+ Ke1 2.Ke6 e5#
- 1. Bc2+ Kg5 2.Kd6 exd5#
- 1.Sc2+ Kxd3 2.Kf6 exf5#

Interesting idea of tempo-giving checks.

Marek Kolcak
Batumi 2013 Sake 4th Comm



H#2 2 sols

(4+5)

FTF

1. Rg4 Re3+ 2.Be4 Bxe4#

1. Rg2 Be2+ 2.Se3 Rxe3#

FTF specific double-checks.

