



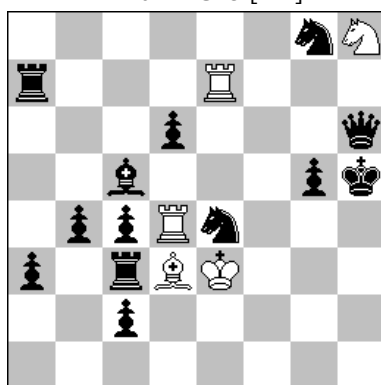
Associazione Problemistica Italiana  
www.accademiadelproblema.org

## Tty FORMULA-ONE 2015

GP-1 : January 2015

**AWARD**

**1<sup>st</sup> Place**  
**M. Parrinello [ITA]**



H≠2      B=Sh8>g6      5+13

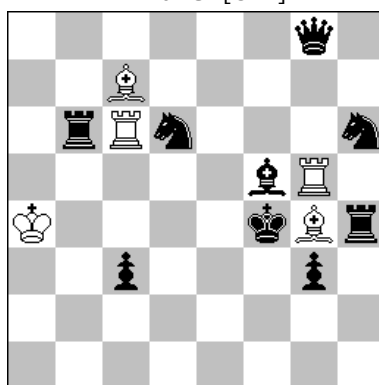
A - diagram

**1.Rb3 Rh7 2.Sc3 Bg6≠**

B - Sh8 > g6

**1.Bb6 Re5 2.Sc5 Rh4≠**

**2<sup>nd</sup> Place**  
**D. Müller [GER]**



H≠2      B=Kf4>f6      5+9

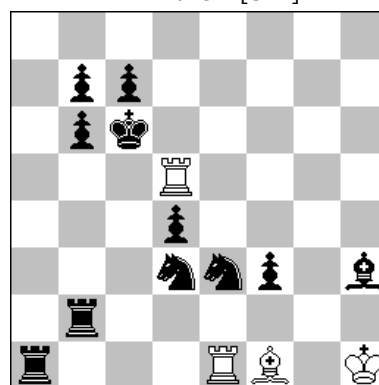
A - diagram

**1.Bc8 Re5 2.Sf7 Rc4≠**

B - Kf4 > f6

**1.Be4 Be6 2.Se8 Bd8≠**

**3<sup>rd</sup> Place**  
**L.M. Martin [SPA]**



H≠2      2111      4+11

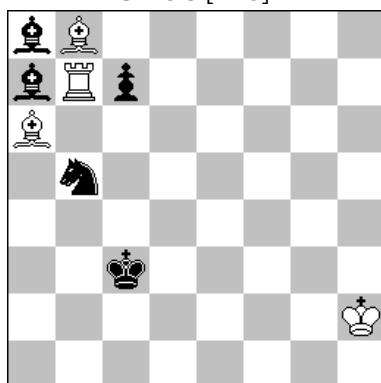
1. Solution

**1.Sc1 Bc4 2.Sg4 Re6≠**

2. Solution

**1.Sd1 Re5 2.Sb4 Bb5≠**

**4<sup>th</sup> Place**  
**J. Lois [ARG]**



H≠2      B=Kc3>e6      4+5

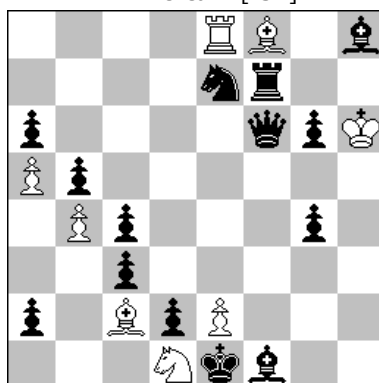
A - diagram

**1.Sa3! Rb2 2.c5 Be5≠**

B - Kc3 > e6

**1.c6 Rf7 2.Sd4! Bc4≠**

**5<sup>th</sup> Place**  
**M. Witztum [ISR]**



H≠2      B=Ke1>a3      8+14

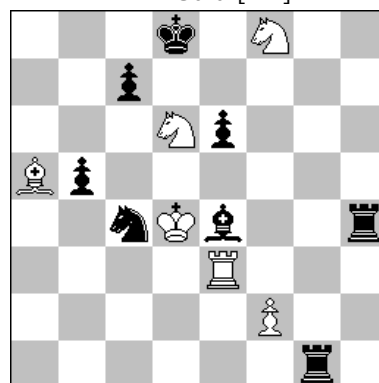
A - diagram

**1.Sd5 Bc5 2.Sf4 Bf2≠**

B - Ke1 > a3

**1.Sc6 Re3 2.Se5 Rxc3≠**

**6<sup>th</sup> Place**  
**V. Tinebra [ITA]**



H≠2      B=Sd6>g8      6+8

A - diagram

**1.Sxe3 Bd2 2.Sg2 Bg5≠**

B - Sd6 > g8

**1.Sxa5 Ra3 2.Sb7 Ra8≠**