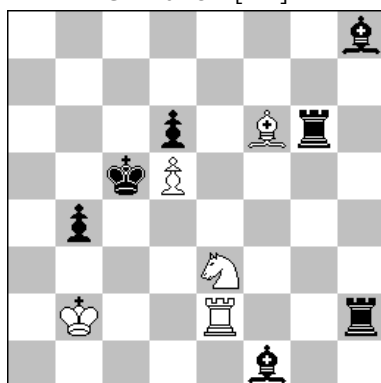




Associazione Problemistica Italiana  
www.accademiadelproblema.org

**TTy FORMULA-ONE 2015**  
GP-3 : March 2015  
**AWARD**

**1<sup>st</sup> Place**  
**G. Brunori [ITA]**



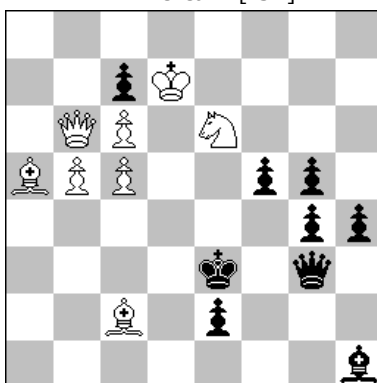
H≠2                      A-B                      6+8

A - diagram

**1.Rg7-A (C?) Rd2 2.Bb5-B Bd4≠**  
B - Pd6 > b5  
**1.Bg2-A (C?) Be5 2.Rb6-B Rc2≠**

**A** - Interference  
**B** - Selfblock  
**C** - Unpin

**2<sup>nd</sup> Place**  
**M. Witztum [ISR]**



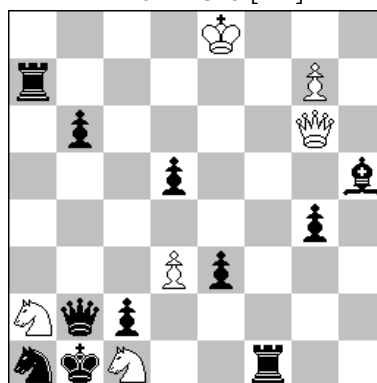
H≠2                      2111                      8+9

Solution 1

**1.Bxc6+A bxc6 2.Qf2-B Qb3≠**  
Solution 2  
**1.Bf3-B Qa7 2.Qd6+A cxd6≠**

**A** - Check-sacrifice  
**B** - Selfblock

**3<sup>rd</sup> Place**  
**M. Parrinello [ITA]**



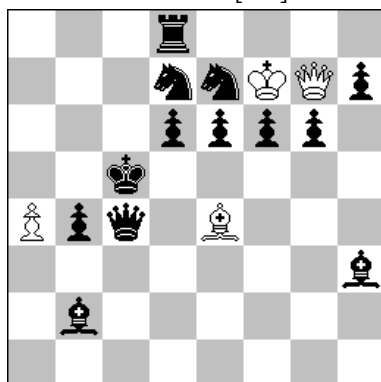
H≠2                      B=Kb1↔Sa1                      6+11

A - diagram

**1.Ra-f7-A Qxb6 2.Rxc1-B Sc3≠**  
B - Kb1↔Sa1  
**1.Rf-f7-A Qf6 2.Rxa2-B Sb3≠**

**A** - Interference-unpin  
**B** - Selfblock

**4<sup>th</sup> Place**  
**V. Tinebra [ITA]**



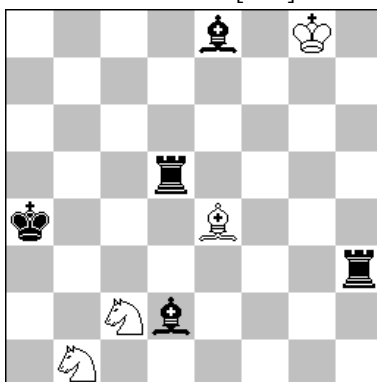
H≠2                      A-B                      4+13

A - diagram

**1.Se5+A+B Kxf6**  
**2.Sf5!-B+C Qa7≠**  
B - Qc4 > d4  
**1.Sf5 A+B Kxe6**  
**2.Sb6! B+C Qc7≠**

**A** - Interference  
**B** - Open-line  
**C** - Only move!

**5<sup>th</sup> Place**  
**L.M. Martin [SPA]**



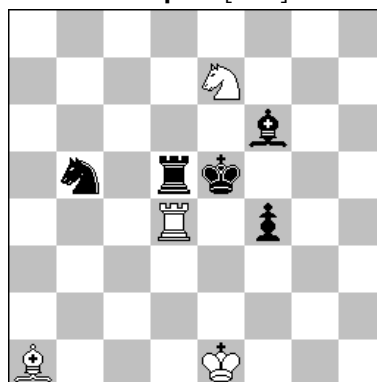
H≠2                      2111                      4+5

Solution 1

**1.Ba5-A Sd2 2.Rd7-B Bc6≠**  
Solution 2  
**1.Ra5-A Bd5 2.Be3-B Sc3≠**

**A** - Selfblock  
**B** - Interference

**6<sup>th</sup> Place**  
**J. Kapros [ARG]**



H≠2                      A-B                      4+5

A - diagram

**1.Rd6-A Rd2+ 2.Sd4-B Re2≠**  
Se7 > g5  
**1.Sd6-A Rc4+ 2.Rd4-B Rc5≠**

**A** - Selfblock  
**B** - Selfpin