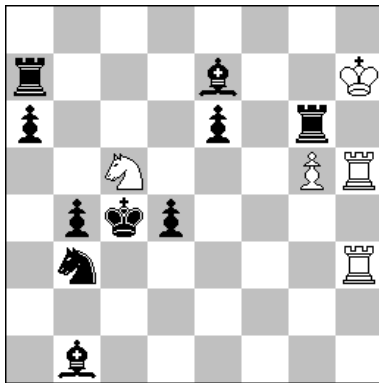




Associazione Problemistica Italiana  
www.accademiadelproblema.org

**Tty FORMULA-ONE 2015**  
GP-5 : May 2015  
**AWARD**

**1<sup>st</sup> Place**  
G. Brunori [ITA]

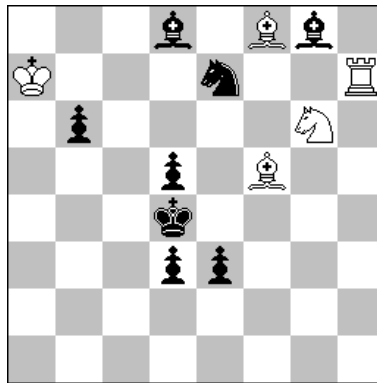


H≠2      B=Sb3>a4      5+10  
2 solutions

A - diagram

**1.Rxg5+ Sd3(Se4?) 2.Rg6 Sb2(Se5?)≠**  
**1.Bxg5+ Sd7(Sb7?) 2.Be7 Sb6(Se5?)≠**  
B - Sb3 > a4  
**1.Rxg5+ Se4(Sd3?) 2.Rg6 Sd2≠**  
**1.Bxg5+ Sb7(Sd7?) 2.Be7 Sa5≠**

**2<sup>nd</sup> Place**  
J. Kapros [ARG]



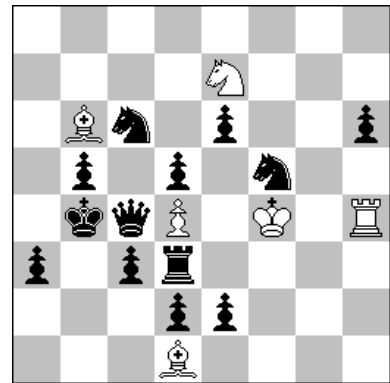
H≠2      2111      5+8

Solution 1

**1.Sxf5 Bb4(Rc7?) 2.Se7 Rh4≠**  
Solution 2

**1.Sxg6 Rc7(Bb4?) 2.Se7 Bg7≠**

**3<sup>rd</sup> Place**  
M. Parrinello [ITA]

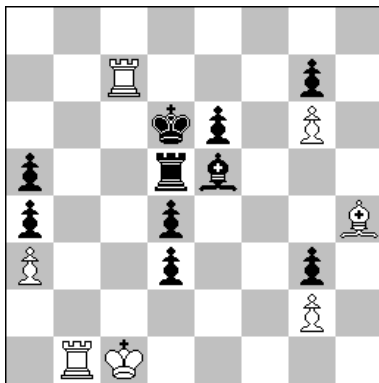


H≠2      B=Se7>e1      6+13

A - diagram

**1.Scxd4 Ke5 2.Sc6+ Sxc6≠**  
1.Rxd4+? Kf3 2.Rd3+?? Sxc6#???  
B - Se7 > e1  
**1.Rxd4+ Kf3 2.Rd3+ Sxd3≠**  
1.Scxd4? Ke5 2.Sc6+?? Sxd3#???

**4<sup>th</sup> Place**  
L.M. Martin [SPA]



H≠2      2111      7+10

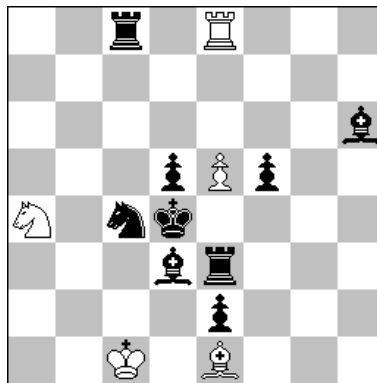
Solution 1

**1.Rb5 Bd8(Rb7?) 2.Rd5 Rb6≠**

Solution 2

**1.Bf6 Rb-b7(Bd8?) 2.Be5 Be7≠**

**5<sup>th</sup> Place**  
R. Krättschmer [GER]



H≠2      2111      5+9

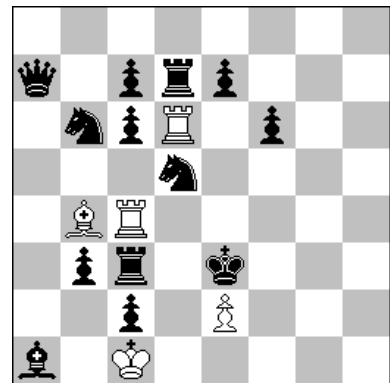
Solution 1

**1.Rxe5+ Bd2 2.Re3 Bc3≠**

Solution 2

**1.Sxe5+ Sc5 2.Sc4 Sb3≠**

**6<sup>th</sup> Place**  
M. Witztum [ISR]



H≠2      2111      5+13

Solution 1

**1.Rd3 Be1 2.Rc3 Re6≠**

Solution 2

**1.Sf4 Rd2 2.Sf-d5 Bc5≠**