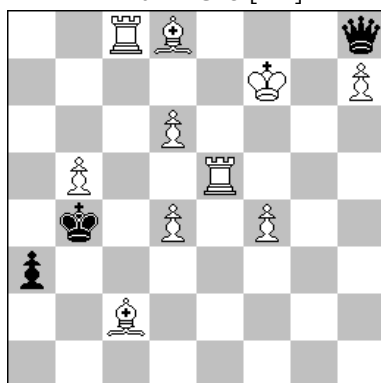




Associazione Problemistica Italiana  
www.accademiadelproblema.org

**TTy FORMULA-ONE 2015**  
GP-8 : August 2015  
**AWARD**

**1<sup>st</sup> Place**  
**M. Parrinello [ITA]**



H≠2\*\* 2111 10+3

Solution 1

1... Bh4 2.Qd8 Be1#

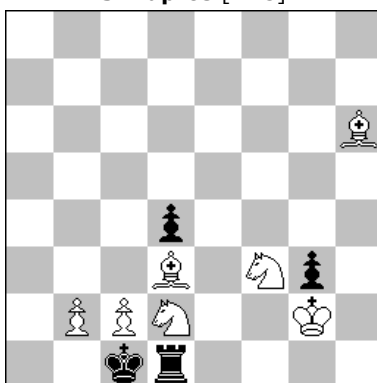
**1.Qxd8 Re1 2.Qa5 Rb1#**

Solution 2

1... Re1 2.Qe5 Rb1#

**1.Qxe5 Bh4 2.Qxb5 Be1#**

**2<sup>nd</sup> Place**  
**J. Kapros [ARG]**



H≠2\* 7+4

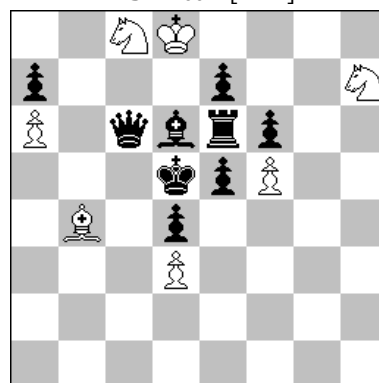
Setplay

1... Sg5 2.Kxd2 Sg-f3#

Solution

**1.Kxb2 Bf8 2.Kc1 Ba3#**

**3<sup>rd</sup> Place**  
**M.J. Elbaz [MAR]**



H≠2\* 7+9

Setplay

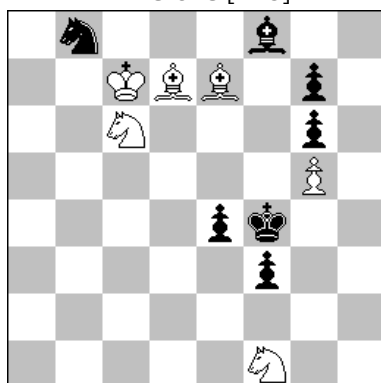
1... Sxe7+A(B?) 2.Rxe7 Sxf6-B#

Solution

**1.Bb8 Sxf6+B(A?)**

**2.Rxf6 Sxe7-A#**

**4<sup>th</sup> Place**  
**D. Perone [ARG]**



H≠2\*\* 2111 6+7

Solution 1

1... Se5 2.Sc6 Sxg6#

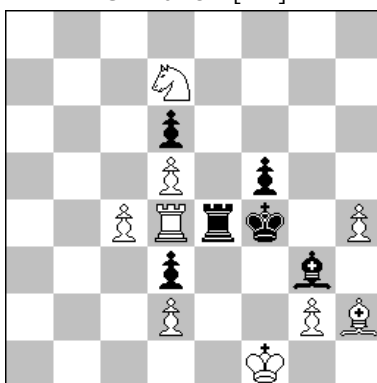
**1.Sxc6 Bc5 2.Se5 Be3#**

Solution 2

1... Bc5 2.Be7 Be3#

**1.Bxe7 Se5 2.Bxg5 Sxg6#**

**5<sup>th</sup> Place**  
**G. Brunori [ITA]**



H≠2\* A-B 9+6

A - diagram

1... Rxd3 2.Rd4 Rxd4#

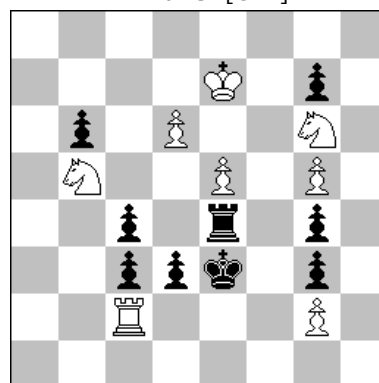
**1.Rxd4 Bxg3+ 2.Ke4 Sf6#**

B - Sd7 > e3

1... Bg1 2.Bh2 Bxh2#

**1.Bxh2 Rxe4+ 2.Kg3 Sxf5#**

**6<sup>th</sup> Place**  
**D. Müller [GER]**



H≠2\*\* 2111 8+9

Solution 1

1... Sf4 2.g6 Sd5#

**1.Rd4 Sf4 2.Re4 Sd5#**

[1.Rd4 Sxd4? 2.?? Sf5#??]

Solution 2

1... Sd4 2.b5 Sf5#

**1.Rf4 Sd4 2.Re4 Sf5#**

[1.Rf4 Sxf4? 2.?? Sd5#??]