



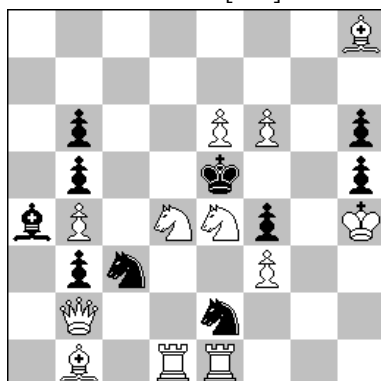
Associazione Problemistica Italiana
www.accademiadelproblema.org

TTy FORMULA-ONE 2015

GP-10 : October 2015

AWARD

1st Place
E. Navon [ISR]



H=2 2111 12+10

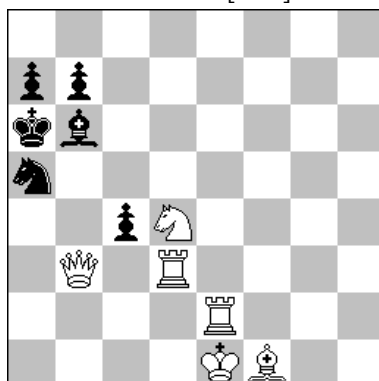
Solution 1

1.Sxd4 Sd6+(Sg3+?)
2.Sd-e2(Sc-e2?) Bf5=

Solution 2

1.Sxe4 Sf5+(Sxb5?)
2.S4-c3(S2-c3?) Rd6=

2nd Place
D. Perone [ARG]



H=2 2111 6+6

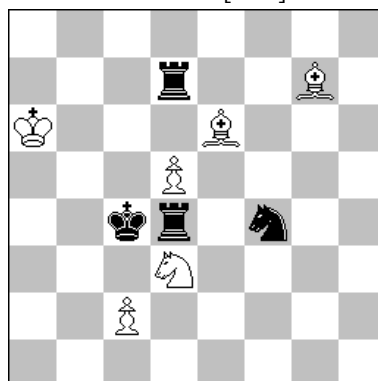
Solution 1

1.Sxb3 Re6 2.Sa5 Ra3=

Solution 2

1.Bxd4 Ra2 2.Bb6 Rd6=

3rd Place
D. Müller [GER]



H=2 3111 6+4

Solution 1

1.R4xd5 Bxd7 2.Se6 Bxe6=

Solution 2

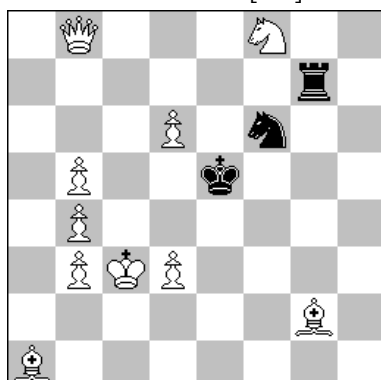
1.Sxd5 Bxd4 2.Rg7 Bxg7=

Solution 3

1.R7xd5 Sxf4 2.Rd3 Sxd3=

	<i>Self-pin</i>	<i>Pas. Sacr.</i>	<i>Active sacr.</i>
Sol. 1	Rd4- A	Rd7- B	Sf4- C
Sol. 2	Sf4- C	Rd4- A	Rd7- B
Sol. 3	Rd7- B	Sf4- C	Rd4- A

4th Place
M. Parrinello [ITA]



H=2 2111 10+3

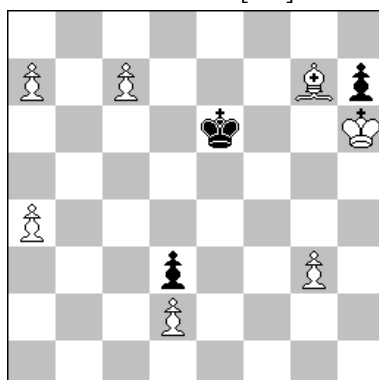
Solution 1

1.Se4+ Kc2+ 2.Kd5 Bxg7=

Solution 2

1.Rc7+ Kd2+ 2.Kxd6 Bxf6=

5th Place
A. Garofalo [ITA]



H=2 A-B-C-D 7+3

A - diagram

1.Kf7 c8S 2.Kg8 Sd6=

B = A + Bg7>e5

1.Kd7 a8B 2.Kc8 Bc6=

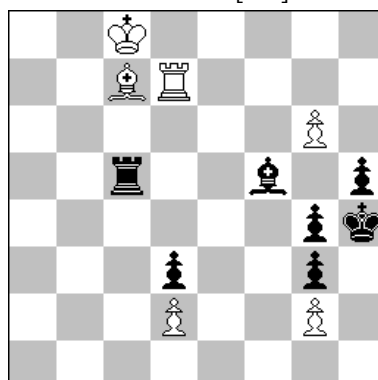
C = B + Pc7>b7

1.Kd5 b8R 2.Kc4 Rb5=

D = C + Pb7>f7

1.Kf5 f8Q+ 2.Kg4 Qf1=

6th Place
G. Brunori [ITA]



H=2 A-B 6+7

A - diagram

1.Bxd7+ Kxd7 2.Rg5 Bd8=

B - Pg4 > g5

1.Rxc7+ Kxc7 2.Bg4 Rd4=