



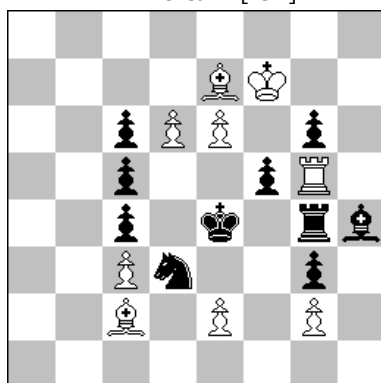
Associazione Problemistica Italiana
www.accademiadelproblema.org

TTY FORMULA-ONE 2015

GP-11 : November 2015

AWARD

1st Place M. Witztum [ISR]



H≠2 B-After the Key 9+10

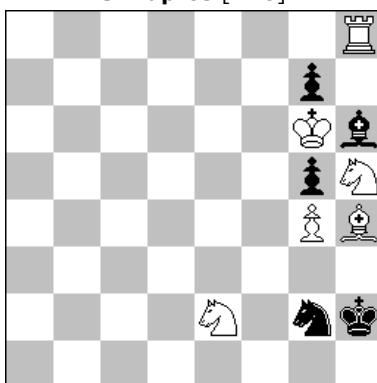
A - diagram

1.Kd5 Kf6 (Bf6?) 2.Sf4 e4≠

B - after the key

1.Ke4 Bf6 (Kf6?) 2.f4 Re5≠

2nd Place J. Kapros [ARG]



H≠2 B-After the key 6+5

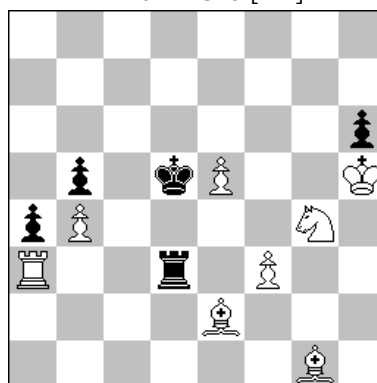
A - diagram

1.Kh1 Bxg5 2.Bxg5 Sg3≠

B - after the key

1.Kh2 Sxg7 2.Bxg7 Bg3≠

3rd Place M. Parrinello [ITA]



H≠2 B-After the key 8+5

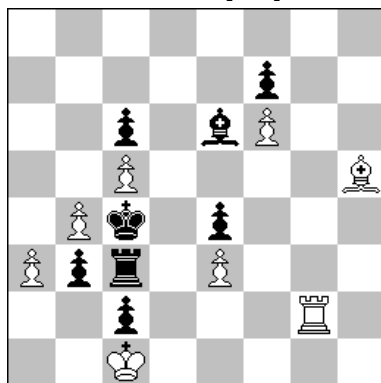
A - diagram

1.Re3 Bxb5 2.Kd4 Rd3≠

B - after the key

1.Rd3 Bc5 2.Kc4 Se3≠

4th Place E. Navon [ISR]



H≠2 B-After the key 8+8

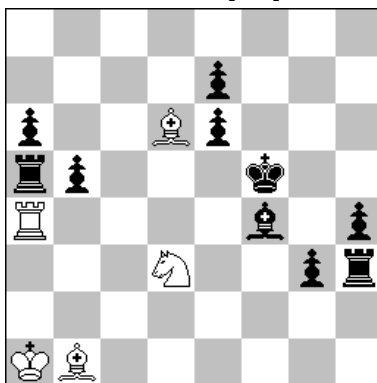
A - diagram

1.Kd5 Bxf7 2.Rc4 Rg5≠

B - after the key

1.Kc4 Rxc2 2.Bd5 Be2≠

5th Place F. Simoni [ITA]



H≠2 B-After the key 5+10

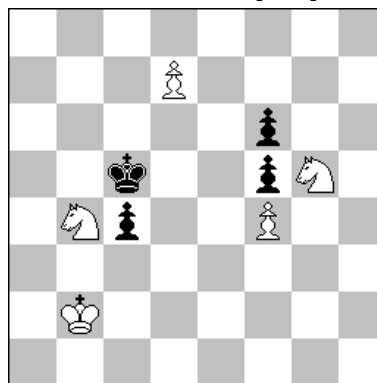
A - diagram

1.Bg5 Bf4 2.Bf6+ Se5≠

B - after the key

1.Bf4 Bxe7 2.Be5+ Sb2≠

6th Place R. Krätschmer [GER]



H≠2 B-After the key 5+4

A - diagram

1.Kd6 d8R+ 2.Ke7 Sc6≠

B - after the key

1.Kc6 d8B 2.Kd4 Bb6≠