



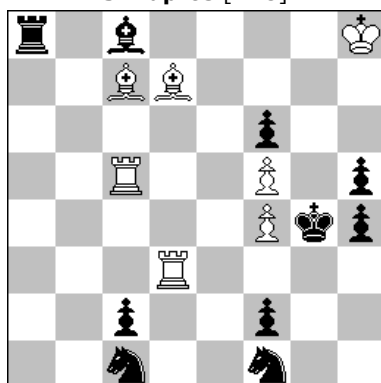
Associazione Problemistica Italiana
www.accademiadelproblema.org

TTy FORMULA-ONE 2015

GP-11 : December 2015

AWARD

1st Place
J. Kapros [ARG]



H#2 2111 7+10

Solution 1

1.Sa2 (Sb3?, Se2?, Sxd3?) **Ba4**

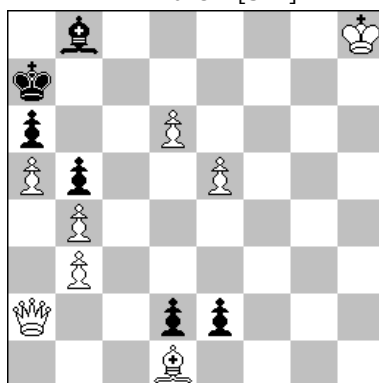
2.c1B (c1R?, c1S?) **Bd1**≠

Solution 2

1.Sh2 (Sd2?, Sg3?, Se3?) **Rxc2**

2.f1R (f1B?, f1S?) **Rg2**≠

2nd Place
L.M. Martin [SPA]



H#2 A-B-C 8+6

A - diagram

1.e1S Bf3 **2.d1B Qf2**≠

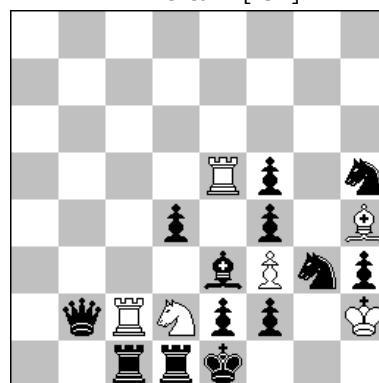
B - Ka7 > c6

1.e1B Bg4 **2.d1S Qg2**≠

C - Ka7 > f8

1.e1R Bh5 **2.d1R Qf2**≠

3rd Place
M. Witztum [ISR]



H#2 2111 6+13

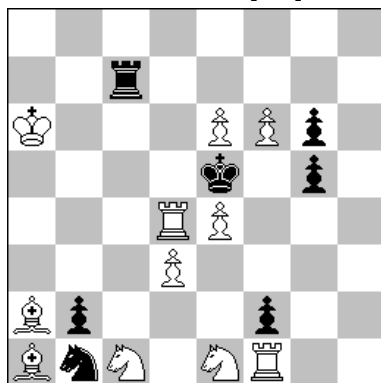
Solution 1

1.Bxd2 Rxd2 **2.f1R R5xe2**≠

Solution 2

1.Sf1+ Sxf1 **2.exf1B Bxf2**≠

4th Place
M. Parrinello [ITA]



H#2 2111 11+7

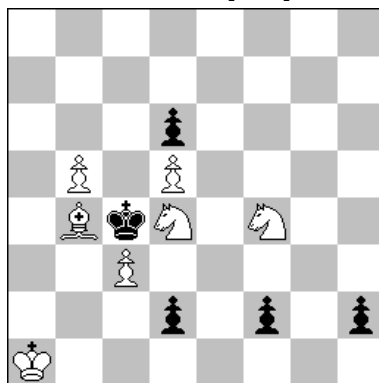
Solution 1

1.bxc1S Rxf2 **2.Scxd3 Sexd3**≠

Solution 2

1.fxe1S Bxb2 **2.Sexd3 Scxd3**≠

5th Place
D. Perone [ARG]



H#2 3111 7+5

Solution 1

1.d1B Sf5 **2.Bb3 Sxd6**≠

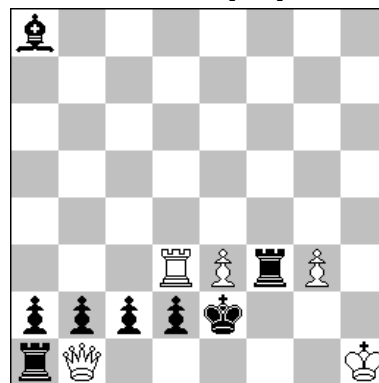
Solution 2

1.f1B Sg2 **2.Bd3 Se3**≠

Solution 3

1.h1B Sd3 **2.Bxd5 Sb2**≠

6th Place
E. Navon [ISR]



H#2 4111 5+8

Solution 1

1.c1S Qxb2 **2.Kd1 Qxd2**≠

Solution 2

1.c1B Rxd2+ **2.Kxe3 Qd3**≠

Solution 3

1.d1S Qc1 **2.Sxe3 Rd2**≠

Solution 4

1.d1R+ Kg2 **2.Re1 Qxc2**≠