



Associazione Problemistica Italiana  
www.accademiadelproblema.org

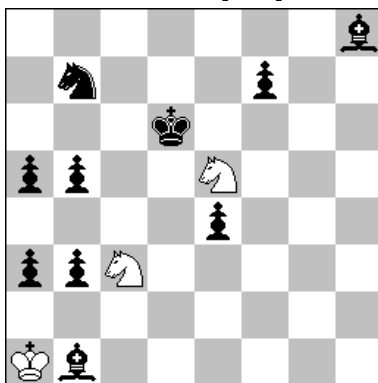
## TTY FORMULA-ONE 2017

GP-2: February 2017

### AWARD

#### 1<sup>st</sup> Place

D. Müller [GER]



H≠3 B = ∪180° 3+10

a - diagram

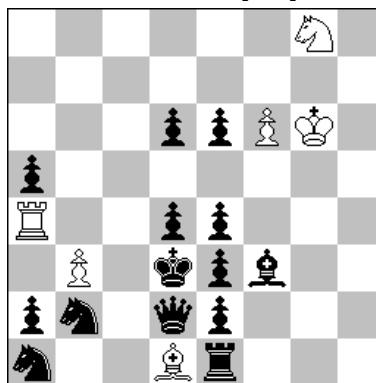
**1.Kc5 Sc4 2.Kb4 Sb2 3.Sc5 Sd5≠**  
1.Ke7? Sd5?(Se4?) 2.Kf8 Sf6 3.Bg7 Sg6?≠

b = ∪180°

**1.Kd2 Se4+ 2.Kc1 Sc3 3.Bb2 Sb3≠**  
1.Kf4? Sf5? 2.Kg5 Sg7 3.Sf4 Se4?≠

#### 2<sup>nd</sup> Place

M. Witztum [ISR]



H≠2,5 B = ∪180° 6+14

a - diagram

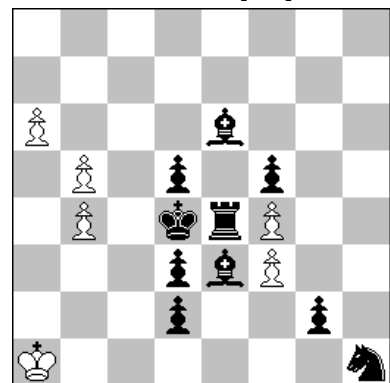
**1... Se7 2.Sxa4 (Sxd1?) Sd5**  
**3.Sc3 Sf4≠**

b = ∪180°

**1... Sa3 2.Sxe8 (Sxh5?) Sb5**  
**3.Sf6 Sc7≠**

#### 3<sup>rd</sup> Place

G. Brunori [ITA]



H≠3 B = ∪180° 6+10

a - diagram

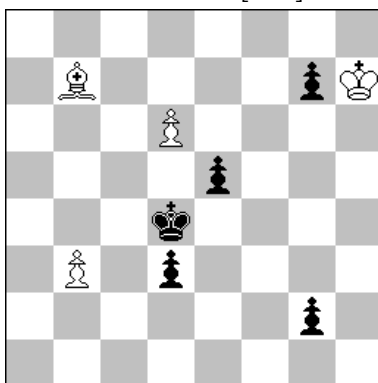
**1.Kc3 a7 2.Rc4 a8Q 3.Kd4 Qh8≠**

b = ∪180°

**1.Kd4 cxb7 2.Bf4 b8S 3.Ke5 Sc6≠**

#### 4<sup>th</sup> Place

S. Trommler [GER]



H≠3 B = ∪180° 4+5

a - diagram

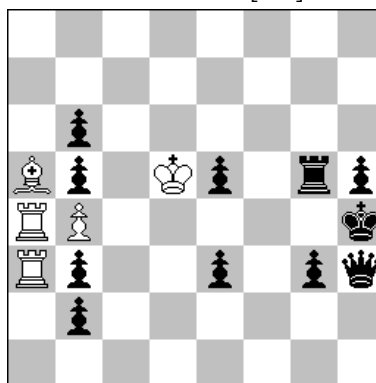
**1.g1S d7 2.Se2 d8B 3.Sc3 Bb6≠**

b = ∪180°

**1.b1R g7 2.Rb6 g8Q 3.Rd6 Qg5≠**

#### 5<sup>th</sup> Place

M. Parrinello [ITA]



H≠2,5 B = ∪180° 5+11

a - diagram

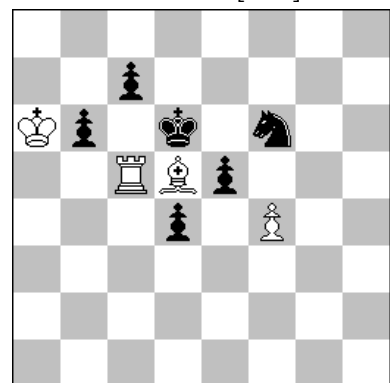
**1... Ra1 2.bxa5 bxa5+ 3.Qg4 Rh1≠**

b = ∪180°

**1... Bxg3 2.gxh6 gxh6+ 3.Rb5 Be1≠**

#### 6<sup>th</sup> Place

T. Giakatis [GRA]



H≠2,5 B = ∪180° 4+6

a - diagram

**1... Ra5 2.b5 fxe5+ 3.Kc5 Rxb5≠**

b = ∪180°

**1... Bh1 2.g2 Re4+ 3.Kf3 Bxg2≠**

