



Associazione Problemistica Italiana  
www.accademiadelproblema.org

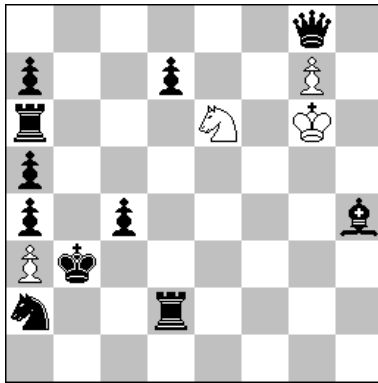
## TTY FORMULA-ONE 2017

GP-3: March 2017

### AWARD

#### 1<sup>st</sup> Place

F. Simoni [ITA]



H≠3 B=Sa2>e2 4+11

a - diagram

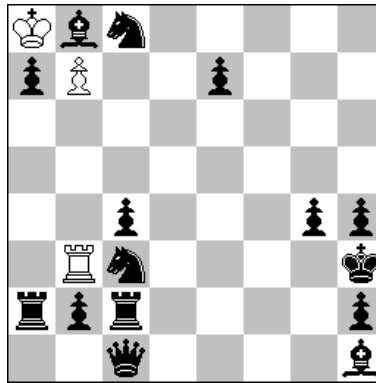
1.Qf8 gxf8B 2.Rb2 (Pd6?) Bb4  
3.d6 (Bf6?) Sd4≠

b - Sa2 > e2

1.Qh8 gxh8Q 2.Rc2 (Bf6?) Qa1  
3.Bf6 (Pd6?) Sc5≠

#### 2<sup>nd</sup> Place

M. Parrinello [ITA]



H≠2,5 B=Pa7⇔Pb7 3+15

a - diagram

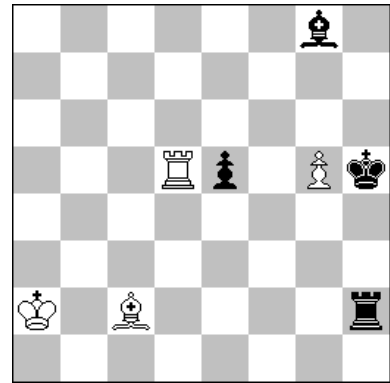
1... Rb4 2.Sd5 bxc8Q 3.c3 Qxg4≠

b - Pa7⇔Pb7

1... Rxb2 2.Sa4 axb8Q 3.Rc3 Qxh2≠

#### 3<sup>rd</sup> Place

G. Brunori [ITA]



H≠3 211111 4+4

Solution 1

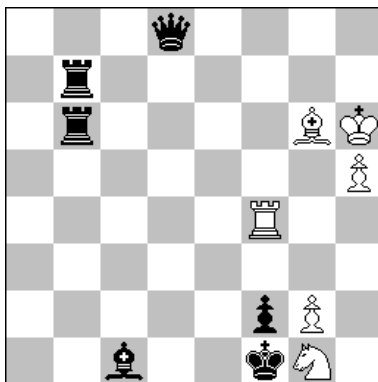
1.Rh4 Bb3 2.Be6 Rxe5 3.Bg4 Bf7≠

Solution 2

1.Bh7 Rd2 2.Rg2 Bf5 3.Rxg5 Rh2≠

#### 4<sup>th</sup> Place

M. Witztum [ISR]



H≠2,5 B=Kf1>h1 6+6

a - diagram

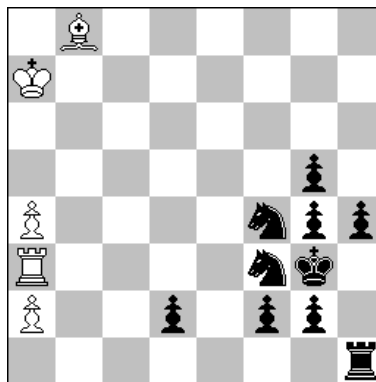
1... Sf3 2.Ba3 Rg4 3.Bd6 Bd3≠

b - Kf1 > h1

1... Se2 2.Rb5 Be4 3.Rg5 Rh4≠

#### 5<sup>th</sup> Place

A. Garofalo [ITA]



H≠2,5 021111 5+10

Solution 1

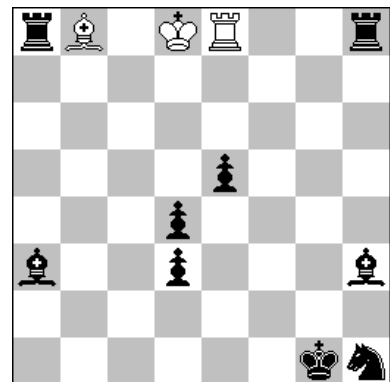
1... Rd3 2.Rh3 Rd6 3.Sd3 Rxd3≠

Solution 2

1... Be5 2.Rh2 Bc3 3.Se5 Bxe5≠

#### 6<sup>th</sup> Place

S. Trommler [GER]



H≠3 211111 3+9

Solution 1

1.Bf8 Rxe5 2.Ra1 Re2 3.Rf1 Bh2≠

Solution 2

1.Bc8 Bxe5 2.Rh2 Bg3 3.Rg2 Re1≠

