



Associazione Problemistica Italiana  
www.accademiadelproblema.org

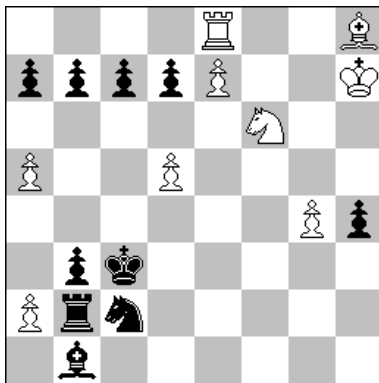
## TTY FORMULA-ONE 2017

GP-6: June 2017

### AWARD

#### 1<sup>st</sup> Place

F. Simoni [ITA]



H≠3 Duplex 9+10

a - Diagram

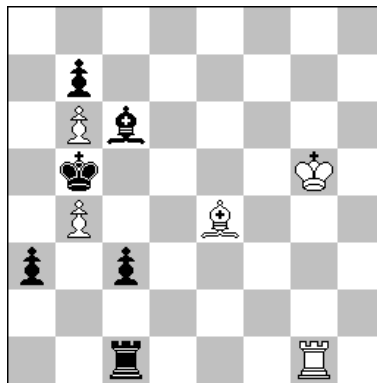
1.Rxa2 Rc8 2.Kb2 Rxc7 3.Sa3+ Se4≠

b - Duplex

1.Bg7 bxa2 2.Rh8 Rb6 3.Sg8+ Sd4≠

#### 2<sup>nd</sup> Place

G. Brunori [ITA]



H≠2,5 Duplex 5+6

a - Diagram

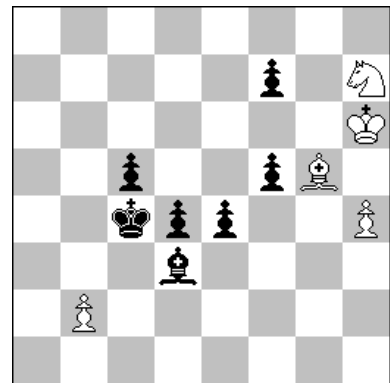
1... Rxc1! (Rg2?) 2.Ka4 Rb1  
3.Bb5 Bc2≠

b - Duplex

1... Bxe4! (Bd7?) 2.Kh5 Bf5  
3.Rg5 Rh1≠

#### 3<sup>rd</sup> Place

D. Müller [GER]



H≠3 Duplex 5+7

a - Diagram

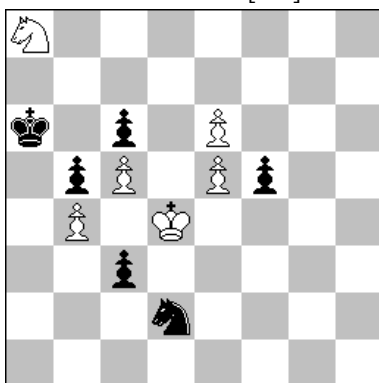
1.Be2 Sf6 2.Kd3 Sd5 3.c4 Sb4≠

b - Duplex

1.Kh5 Bf1 2.Bh6 Bh3 3.Sg5 Bg4≠

#### 4<sup>th</sup> Place

M. Parrinello [ITA]



H≠3 Duplex 6+6

a - Diagram

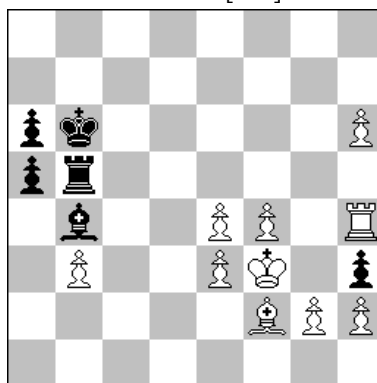
1.Sc4 e7 2.Sb6 e8Q 3.Sxa8 Qxa8≠

b - Duplex

1.Sb6 c2 2.Sc4 c1Q 3.Sxd2 Qxd2≠

#### 5<sup>th</sup> Place

E. Navon [ISR]



H≠2,5 Duplex 10+6

a - Diagram

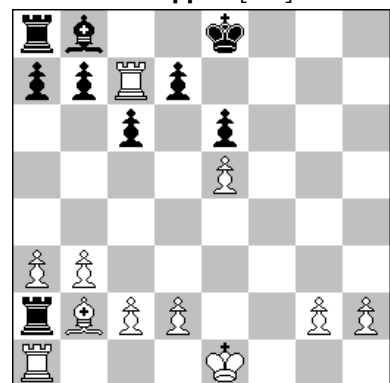
1... Rh5 2.a4 Bh4 3.Ka5 Bd8≠

b - Duplex

1... Be1 2.g4 Rxb3 3.Kg3 Rxe3≠

#### 6<sup>th</sup> Place

A. Cuppini [ITA]



H≠2,5 Duplex 11+9

a - Diagram

1... Rxb7 2.Bxe5 Bxe5 3.0-0-0 Rb8≠

b - Duplex

1... Bxc7 2.0-0-0 Bxe5 3.Ba1 Rxa1≠

## Ranking after GP-6 2017

<b>R</b>	<b>Author</b>	<b>1</b>	<b>2</b>	<b>3</b>	<b>4</b>	<b>5</b>	<b>6</b>	<b>7</b>	<b>8</b>	<b>9</b>	<b>10</b>	<b>11</b>	<b>12</b>	<b>TOT</b>
1°	<b>Parrinello M.</b> [ITA]	9	2	6	6	-	3							26
2°	<b>Simoni F.</b> [ITA]	-	-	9	3	4	9							25
3°	<b>Brunori G.</b> [ITA]	-	4	4	9	-	6							23
4°	<b>Müller D.</b> [GER]	4	9	-	2	-	4							19
5°	<b>Witztum M.</b> [ISR]	6	6	3	1	2	-							18
6°	<b>Luce S.</b> [FRA]	2	-	-	-	9	-							11
7°	<b>Garofalo A.</b> [ITA]	-	-	2	4	3	-							9
8°	<b>Navon E.</b> [ISR]	-	-	-	-	6	2							8
9°	<b>Trommler S.</b> [GER]	1	3	1	-	-	-							5
10°	<b>Giakatis T.</b> [GRE]	3	1	-	-	1	-							5
11°	<b>Cuppini A.</b> [ITA]	-	-	-	-	-	1							1