

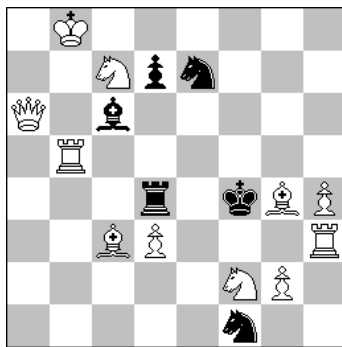
Tetragon 2016-2017

Themes of 1st Quarter [February 1, 2016 – April 30, 2016]

Section: **Direct #2**

OERAL theme: "At least three black men make their correction move on the same square causing self-interference, which White exploits in the mating move (in one or more phases play)".

Jan HARTONG
L'Italia Scacchistica 1951
2nd Prize



EXAMPLE

Solution *

1.Qb6! [zugzwang]

1... Pd7~/Pd5; 2.Se6/Qxd4#

1... Bc6~/Bd5; 2.Qh6/Qd6# (if 1... Bxb5; 2.Qxd4#**)

1... Rd4~/Rd5(e4); 2.Be5/Rf3#

1... Se7~/Sd5; 2.Rf5/Qxd4#

if 1... Sg3,Sd2/Se3; 2.B(x)d2/g3#**

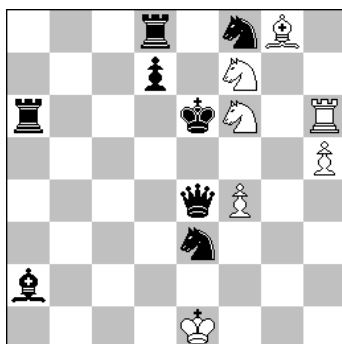
* Monophasic play

** This move is not thematic.

Section: **Helpmate 2**

FEATHER theme: "Black pieces move across the square where black King stood in the initial position".

Christopher J. FEATHER
Moultings 2



EXAMPLE

Solution 1

1.Kf5 Sd5 2.Rxh6 Sxh6#

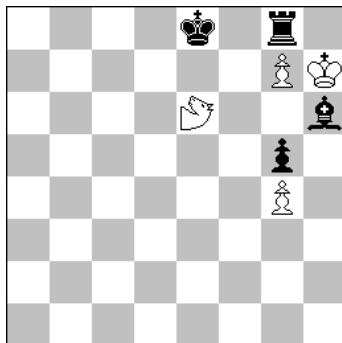
Solution 2

1.Ke7 Sd6 2.Bxg8 Sxg8#

Section: **Fairy**

With fairy piece: "One Dragon (P+S) or more Dragon pieces in #2, or H#2, or S#2".

Valerio AGOSTINI
Original 2015



H#2 2111 4+4

EXAMPLE

Fairy piece: **Dragon** e6

Solution 1

1.Rf8 g8=DR 2.Rf6 DRxf6#

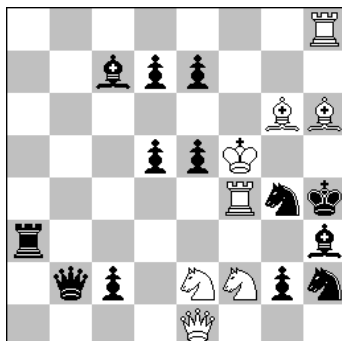
Solution 2

1.Rh8+ gxh8=Q+ 2.Bf8 Qxf8#

Section: **Selfmate 2**

Lender theme: "In the mating move Black occupies the square just evacuated by White".

Uri AVNER
Lender JT 1989
1st Prize



S#2 8+13

EXAMPLE

Solution

1.Rb4! [2.Bf4+, Sh6#*]

1... e4; 2.Bg7+, Sh6#*

1... Ra8; 2.Se4+, Sf2#*

1... d4; 2.Sd3+, Sf2#*

* Thematic move

Ogni Sezione avrà una classifica a parte e gli Autori potranno partecipare anche a tutte e 4 le sezioni presentate (con un problema per ciascuna). Sono ammesse posizioni gemellari, problemi con Gioco Apparente, duplex e zeropositions.

Inviare gli inediti [max. un problema per Autore (no joint) in ciascuna delle sezioni] unicamente al seguente indirizzo e-mail: valerio.agostini@gmail.com entro e non oltre le ore 24.00 del 30 aprile 2016. Per consultare il bando basta andare nel sito, seguendo il percorso ARCHIVIO-BANDI-PROBLEMI-2016 etc.